

Geological Society, London, Special Publications

## **Accretionary orogens through Earth history**

Peter A. Cawood, Alfred Kröner, William J. Collins, Timothy M. Kusky, Walter D. Mooney and Brian F. Windley

*Geological Society, London, Special Publications* 2009, v.318;  
p1-36.

doi: 10.1144/SP318.1

---

**Email alerting  
service**

click [here](#) to receive free e-mail alerts when  
new articles cite this article

**Permission  
request**

click [here](#) to seek permission to re-use all or  
part of this article

**Subscribe**

click [here](#) to subscribe to Geological Society,  
London, Special Publications or the Lyell  
Collection

---

**Notes**

## Accretionary orogens through Earth history

PETER A. CAWOOD<sup>1\*</sup>, ALFRED KRÖNER<sup>2</sup>, WILLIAM J. COLLINS<sup>3</sup>, TIMOTHY M. KUSKY<sup>4</sup>, WALTER D. MOONEY<sup>5</sup> & BRIAN F. WINDLEY<sup>6</sup>

<sup>1</sup>*School of Earth and Environment, University of Western Australia, 35 Stirling Highway, Crawley, WA 6009, Australia*

<sup>2</sup>*Institut für Geowissenschaften, Universität Mainz, 55099 Mainz, Germany*

<sup>3</sup>*School of Earth Sciences, James Cook University, Townsville, Qld 4811, Australia*

<sup>4</sup>*Department of Earth and Atmospheric Sciences, St. Louis University, St. Louis, MO 63103, USA*

<sup>5</sup>*US Geological Survey, 345 Middlefield Road, Menlo Park, CA 94025, USA*

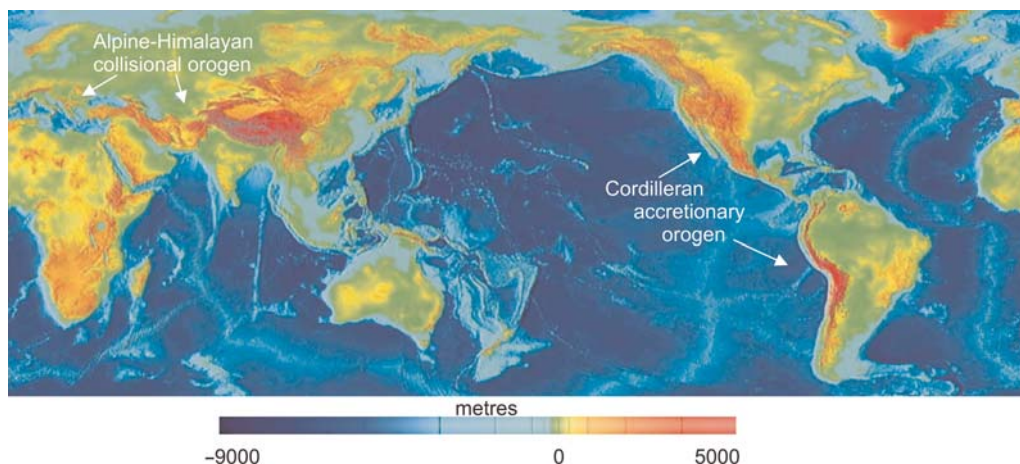
<sup>6</sup>*Department of Geology, University of Leicester, Leicester LE1 7RH, UK*

*\*Corresponding author (e-mail: Peter.Cawood@uwa.edu.au)*

**Abstract:** Accretionary orogens form at intraoceanic and continental margin convergent plate boundaries. They include the supra-subduction zone forearc, magmatic arc and back-arc components. Accretionary orogens can be grouped into retreating and advancing types, based on their kinematic framework and resulting geological character. Retreating orogens (e.g. modern western Pacific) are undergoing long-term extension in response to the site of subduction of the lower plate retreating with respect to the overriding plate and are characterized by back-arc basins. Advancing orogens (e.g. Andes) develop in an environment in which the overriding plate is advancing towards the downgoing plate, resulting in the development of foreland fold and thrust belts and crustal thickening. Cratonization of accretionary orogens occurs during continuing plate convergence and requires transient coupling across the plate boundary with strain concentrated in zones of mechanical and thermal weakening such as the magmatic arc and back-arc region. Potential driving mechanisms for coupling include accretion of buoyant lithosphere (terrane accretion), flat-slab subduction, and rapid absolute upper plate motion overriding the downgoing plate. Accretionary orogens have been active throughout Earth history, extending back until at least 3.2 Ga, and potentially earlier, and provide an important constraint on the initiation of horizontal motion of lithospheric plates on Earth. They have been responsible for major growth of the continental lithosphere through the addition of juvenile magmatic products but are also major sites of consumption and reworking of continental crust through time, through sediment subduction and subduction erosion. It is probable that the rates of crustal growth and destruction are roughly equal, implying that net growth since the Archaean is effectively zero.

Classic models of orogens involve a Wilson cycle of ocean opening and closing with orogenesis related to continent–continent collision. These imply that mountain building occurs at the end of a cycle of ocean opening and closing, and marks the termination of subduction, and that the mountain belt should occupy an internal location within an assembled continent (supercontinent). The modern Alpine–Himalayan chain exemplifies the features of this model, lying between the Eurasian and colliding African and Indian plates (Fig. 1). The Palaeozoic Appalachian–Caledonian orogen (Wilson 1966; Dewey 1969), the Mesoproterozoic Grenville orogen (Gower *et al.* 1990; Hoffman 1991; Gower 1996), and the Palaeoproterozoic Trans-Hudson (Ansdell 2005), Ketilidian (Garde

*et al.* 2002), Capricorn (Cawood & Tyler 2004) and Limpopo (Kröner *et al.* 1999) orogens are inferred ancient examples. Such models, however, do not explain the geological history of a significant number of orogenic belts throughout the world. Such belts lie at plate margins in which deformation, metamorphism and crustal growth took place in an environment of continuing subduction and accretion. These belts are termed accretionary orogens but have also been referred to as non-collisional or exterior orogens, Cordilleran-, Pacific-, Andean-, Miyashiro- and Altaid-type orogens, or zones of type-B subduction (Matsuda & Uyeda 1971; Crook 1974; Bally 1981; Murphy & Nance 1991; Windley 1992; Şengör 1993; Şengör & Natal'in 1996; Maruyama 1997; Ernst 2005). Accretionary



**Fig. 1.** Global elevation showing the collisional Alpine–Himalayan orogen (which occupies an internal location between the Eurasian and colliding African and Indian plates) and the accretionary North and South American Cordilleran orogens (which lie at plate margins involving continuing subduction). Image modified from NOAA, National Geophysical Data Center.

orogens appear to have been active throughout much of Earth history and constitute major sites of continental growth (Cawood *et al.* 2006). The accretionary orogens of the western and northern Pacific extending from Indonesia via the Philippines and Japan to Alaska, and the North and South American Cordillera are archetypal modern examples, with ancient examples represented by the Phanerozoic Terra Australis and Central Asian orogens, the Proterozoic orogens of the Avalon–Cadomian belt of the North Atlantic borderlands, Birimian of West Africa, Svecofennian of Finland and Sweden, Cadomian of western Europe, Mazatzal–Yavapai in southwestern USA, and the Arabian–Nubian Shield, and Archaean greenstone terranes (Windley 1992; Kusky & Polat 1999; Karlstrom *et al.* 2001; Johnson & Woldehaimanot 2003; Cawood 2005; Kröner *et al.* 2008; Murphy & Nance 1991).

Accretionary orogens form at sites of subduction of oceanic lithosphere. They include accretionary wedges, containing material accreted from the down-going plate and eroded from the upper plate, island arcs, back-arcs, dismembered ophiolites, oceanic plateaux, old continental blocks, post-accretion granitic rocks and metamorphic products up to the granulite facies, exhumed high- or ultrahigh-pressure metamorphic rocks, and clastic sedimentary basins. Accretionary orogens contain significant mineral deposits (Groves & Bierlein 2007), and thus provide the mineralization potential of many countries such as Australia, Canada, Chile, Ghana, Zimbabwe, Saudi Arabia, China, Kazakhstan, Mongolia and Indonesia. All accretionary orogens are ultimately involved in a collisional phase when

oceans close and plate subduction ceases, and this may lead to significant structural modification of the accreted material and to partial or complete obliteration as a result of thrusting and extensive crustal shortening (e.g. Central Asian Orogenic Belt; India–Asia collision).

Our understanding of the processes for the initiation and development of accretionary orogens is moderately well established in modern orogens such as the Andes, Japan, Indonesia and Alaska, the broad structure and evolution of which are constrained by plate kinematics, seismic profiles, tomography, field mapping, palaeontology, and isotope geochemistry and geochronology (e.g. Oncken *et al.* 2006a; Fuis *et al.* 2008). However, the processes responsible for cratonization and incorporation of accretionary orogens into continental nuclei and the mechanisms of formation of most pre-Mesozoic accretionary orogens are less well understood. In a uniformitarian sense many of the features and processes of formation of modern accretionary orogens have been rarely applied to pre-Mesozoic orogens, and hence to elucidating Earth evolution.

Our aim is to outline the broad features of accretionary orogens and discuss their implications for understanding models of crustal growth. We believe that future research into accretionary orogens will increase our understanding of tectonic processes and crustal evolution just as work on geosynclines, plate tectonics and mountain belts, terranes, and supercontinents provided a stimulus to orogenic and geological research in past decades (Kay 1951; Aubouin 1965; Wilson 1966; Dewey 1969; Coney *et al.* 1980; Dalziel 1991; Hoffman 1991; Moores 1991).

## Classification of orogens in space and time

Orogens are major linear zones of the Earth's crust that contain variably deformed rocks that accumulated over a long period, dominantly in a marine environment, and that show distinctive distribution of sedimentary facies, deformational styles and metamorphic patterns often aligned approximately parallel to the belt. They are preserved as mountain belts through crustal thickening, magmatism and metamorphism during one or more tectonothermal events (orogenies), which are generally of short duration with respect to the overall age range of the orogen, and which ultimately stabilize and cratonize the orogen.

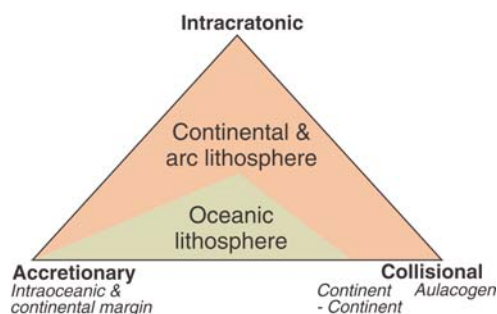
Codifying orogens is fraught with difficulty as each has unique characteristics. However, we believe they can be grouped within a spectrum of three end-member types: collisional, accretionary and intracratonic (Figs 2 and 3). Collisional orogens form through collision of continental lithospheric fragments, accretionary orogens form at sites of continuing oceanic plate subduction, and intracratonic orogens lie within a continent, away from an active plate margin.

Plate-tectonic models of orogenic cycles have been dominated by work on collisional orogens involving a Wilson cycle (Dewey & Spall 1975) of opening and closing of an ocean basin with deformation and metamorphism related to subduction followed by collision of continental blocks to generate mountain belts (Wilson 1966; Dewey 1969;

Brown 2009). This in part reflects the historical focus, and resultant development of geological ideas, on the classic orogens of Europe and eastern North American, which all formed in a collisional setting; the Appalachian–Caledonian, Hercynian and Alpine–Himalayan systems (see Miyashiro *et al.* 1982). However, it has also long been recognized that the Palaeozoic to Recent history of the Circum-Pacific region, where orogeny is in progress, does not readily fit such a model and that alternative mechanisms for this type of orogenesis are required (Matsuda & Uyeda 1971; Coney 1973; Crook 1974; Packham & Leitch 1974).

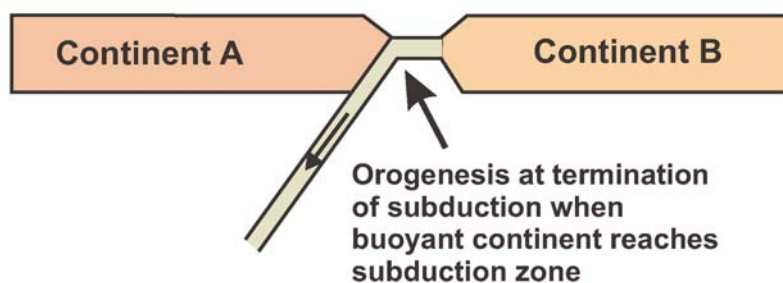
Accretionary and collisional orogens (excluding aulacogens) form at sites of subduction of oceanic lithosphere and are end-members of a spectrum of orogen types (Figs 2 and 3). An early stage is represented by island arc accretion in, for example, Japan (Isozaki 1996; Maruyama 1997) and Alaska (Sisson *et al.* 2003). Such offshore arcs may accrete to one another and to an active continental margin, where they are incorporated into an Andean-type batholith and orogen; for example, the Coastal batholith of Peru, which engulfed the Casma volcanic arc (Petford & Atherton 1995), and the Peninsular batholith of Southern California, and elsewhere along the Cordillera of North and South America (Lee *et al.* 2007). Such arc-generated orogens as old as Neoproterozoic have been recognized (Windley & Smith 1976; Windley & Garde 2009).

Final continental collision and termination of subduction within collisional orogens is generally preceded by an accretionary phase of subduction-related activity linked to ocean closure. Examples include a series of magmatic arcs developed within and along the margins of the Iapetus ocean of the Appalachian–Caledonian orogen (Cawood & Suhr 1992; van Staal *et al.* 1998) and the accreted Kohistan island arc in the western Himalaya orogen that was intruded by the Andean-style Kangdese batholith before final collision between India and Asia and closure of the Tethys ocean (Bignold & Treloar 2003); also, in the Palaeoproterozoic the Trans-Hudson orogen similarly formed during ocean closure and arc accretion events prior to collision of cratons (Lucas *et al.* 1999; St-Onge *et al.* 2009). The Indonesian island arc is currently in transition from a simple system involving underthrusting of oceanic lithosphere in the west to collision with Australian continental lithosphere in the east (Hamilton 1979; Snyder *et al.* 1996b). Conversely, accretionary orogens may contain accreted continental fragments such as in the Central Asian Orogenic Belt (Badarch *et al.* 2002; Kröner *et al.* 2007) and the Abas, Afif and Al-Mahfid terranes in the Arabian–Nubian Shield (Windley *et al.* 1996; Johnson & Woldehaimanot

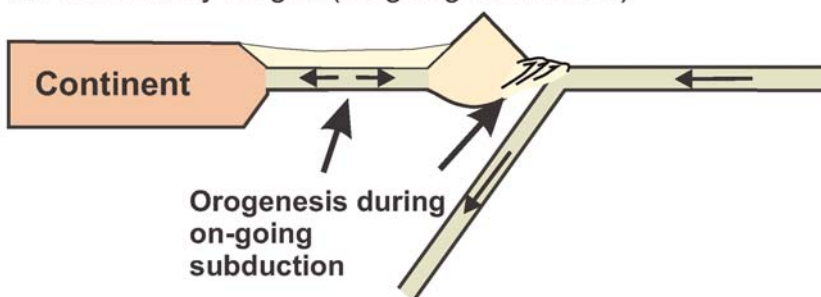


**Fig. 2.** Classification of orogen types into three interrelated end-members: collisional, accretionary and intracratonic. Accretionary orogens include those formed at continental margins and in intraoceanic settings, and collisional orogens include those formed from failed rifts (aulacogens) and through continent–continent collision. Accretionary and continent–continent collisional orogens lie at plate margins and form through the subduction of oceanic lithosphere, with the former forming at sites of continuing subduction and the latter at the termination of subduction.

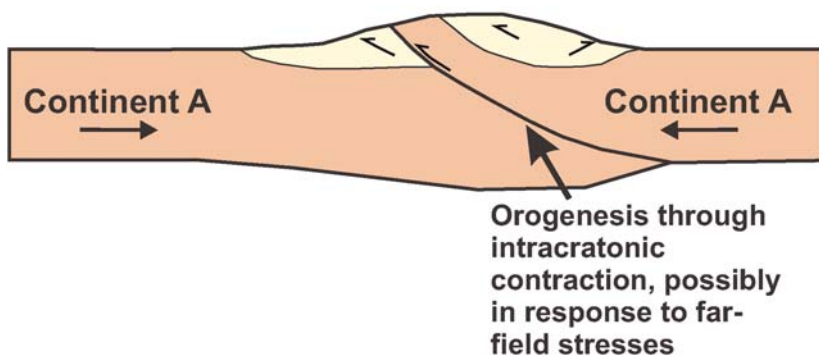
## (a) Collisional orogen (termination of Wilson cycle)



## (b) Accretionary orogen (on-going subduction)



## (c) Intracratonic orogen (no A-type subduction)



**Fig. 3.** Schematic cross-sections through (a) collisional, (b) accretionary and (c) intracratonic orogens.

2003; Stern *et al.* 2004). The long-lived accretionary Central Asian Orogenic Belt completed its history with a Himalayan-style collisional orogen in northern China (Xiao *et al.* 2003, 2004; Windley *et al.* 2007). Nevertheless, accretionary orogens stand out as an integral, well-defined group of orogens that are further characterized by significant crustal growth (Samson & Patchett 1991; Şengör & Natal'in 1996; Jahn *et al.* 2000b; Wu *et al.* 2000; Jahn 2004).

Continental extension that fails to lead to ocean opening and subsequently undergoes compression can occur at failed arms of ocean basins (aulacogens) and at intracontinental settings isolated from plate margins (Figs 2 and 3). The former represents a specific subset of collisional-type orogens that lack any evidence for the production and subsequent subduction of oceanic lithosphere, and the resultant converging continental fragments are the same as those that underwent initial extension (Hoffman



1973; Hoffman *et al.* 1974; Burke 1977; Şengör *et al.* 1978; Şengör 1995). The location of aulacogens adjacent to sites of successful ocean opening means that they are linked to subsequent sites of collisional or accretionary orogens; for example, the Oklahoma aulacogen, SE Laurentia, lies marginal to the Appalachian–Ouachita orogen. The degree of deformation and metamorphism during compressional reactivation of aulacogens is generally minimal (Hoffman *et al.* 1974). Aulacogens or rifts may also form at a high angle to the orogenic trend during collision (Şengör 1976; Şengör *et al.* 1978).

Sites of intracontinental subsidence are sites of thermal and/or rheological weakening that can be reactivated during compression, often in response to far-field stresses (see Sandiford *et al.* 2001). Examples include the late Mesoproterozoic to early Neoproterozoic successions in the North Atlantic (Cawood *et al.* 2004, 2007), and the Neoproterozoic Centralian Supergroup of Central Australia, which was deformed during the late Neoproterozoic Peterman and Palaeozoic Alice Springs orogenies (Collins & Teyssier 1989; Walter *et al.* 1995; Sandiford & Hand 1998; Hand & Sandiford 1999; Cawood & Korsch 2008). These examples are associated with the transformation of Rodinia into Gondwana, and the deformation and metamorphism of the sedimentary successions overlaps with events at the plate margin edges of these supercontinents (e.g. Cawood *et al.* 2004).

Some sites of intracratonic orogenesis are ultimately related to continental margin subduction. For example, intracratonic orogenic activity up to 1300 km inboard of the inferred plate margin occurred in the mid-Palaeozoic and Permo-Triassic in the Terra Australis orogen in eastern Australian and South African segments, respectively (Trouw & De Wit 1999; Collins 2002a), in China in the Mesozoic (Kusky *et al.* 2007b; Li & Li 2007) and along South America in the Tertiary (e.g. Kay & Mpodozis 2002). This activity parallels the plate margin and is related to strain localization in rheologically weak back-arc lithosphere (see Hyndman *et al.* 2005), possibly associated with flat-slab subduction and, hence, is part of the accretionary orogen deformation cycle. Other sites of intracratonic deformation occur inboard of zones of continent–continent collision (Fig. 1, Tianshan) and relate to stress transmission through weak quartz-dominated continental rheologies (see Dewey *et al.* 1986).

### Characteristics of accretionary orogens

Accretionary orogens comprise a range of mafic to silicic igneous rocks and their sedimentary derivatives that develop on oceanic (e.g. West Pacific) or continental (e.g. Andes and Japan) lithospheric substrates during continuing plate convergence.

Magmatic arc activity is characteristically calc-alkaline in composition but ranges from low-K tholeiite to shoshonitic, depending in part on the nature of the interaction of the magma with the arc substrate (e.g. Tatsumi & Eggins 1995). Magmatic activity occurs when the subducting, dehydrating slab of oceanic lithosphere interacts with mantle in the wedge of the overriding plate, and generally initiates at a depth of around 100 km or more above the downgoing slab (Tatsumi 2005). Importantly, and in contrast to magmatic activity at mid-ocean ridges or within-plate settings, arc magmas contain up to a few per cent water and other volatile phases and, as a consequence, are highly explosive (e.g. Krakatoa). Thus the extrusive products of arc volcanism are often reworked as pyroclastic and volcanoclastic deposits into intra-arc and arc flanking basins of the adjoining forearc and back-arc. Water also influenced the crystallization of the plutonic sections of arcs producing amphibole-bearing gabbros and ultramafic rocks, as demonstrated experimentally by Müntener *et al.* (2001) and geologically by Claesson & Meurer (2004) in the Proterozoic Trans-Scandinavian arc belt of Sweden.

Accretionary orogens are variably deformed and metamorphosed by tectonothermal events, commonly in dual, parallel, high-*T* and high-*P* regimes up to granulite and eclogite facies (Miyashiro 1973a; Ernst 2005; Brown 2006, 2009). Deformational features include structures formed in extensional and compressive environments during steady-state convergence (arc or back-arc v. accretionary prism) that are overprinted by short regional compressive orogenic events (Kusky & Bradley 1999; Collins 2002a).

Still-evolving accretionary orogens, such as those around the Pacific, have long, narrow aspect ratios, but completed orogens may be as broad as long (e.g. Central Asian Orogenic Belt, Arabian–Nubian Shield, and Superior and Yilgarn provinces). However, at least with the Superior and Yilgarn provinces, this appears to reflect the subsequent tectonic events such that the original linear extent of these bodies is unknown.

Lithotectonic elements of convergent plate margin systems include an accretionary prism incorporating accreted and tectonically dismembered ocean plate strata, forearc basin and its substrate, magmatic arc and back-arc basin. Some may also incorporate accreted arcs and oceanic plateaux and slices of convergent margin assemblages that have moved along the margin through strike-slip activity.

### Crustal structure in accretionary orogens

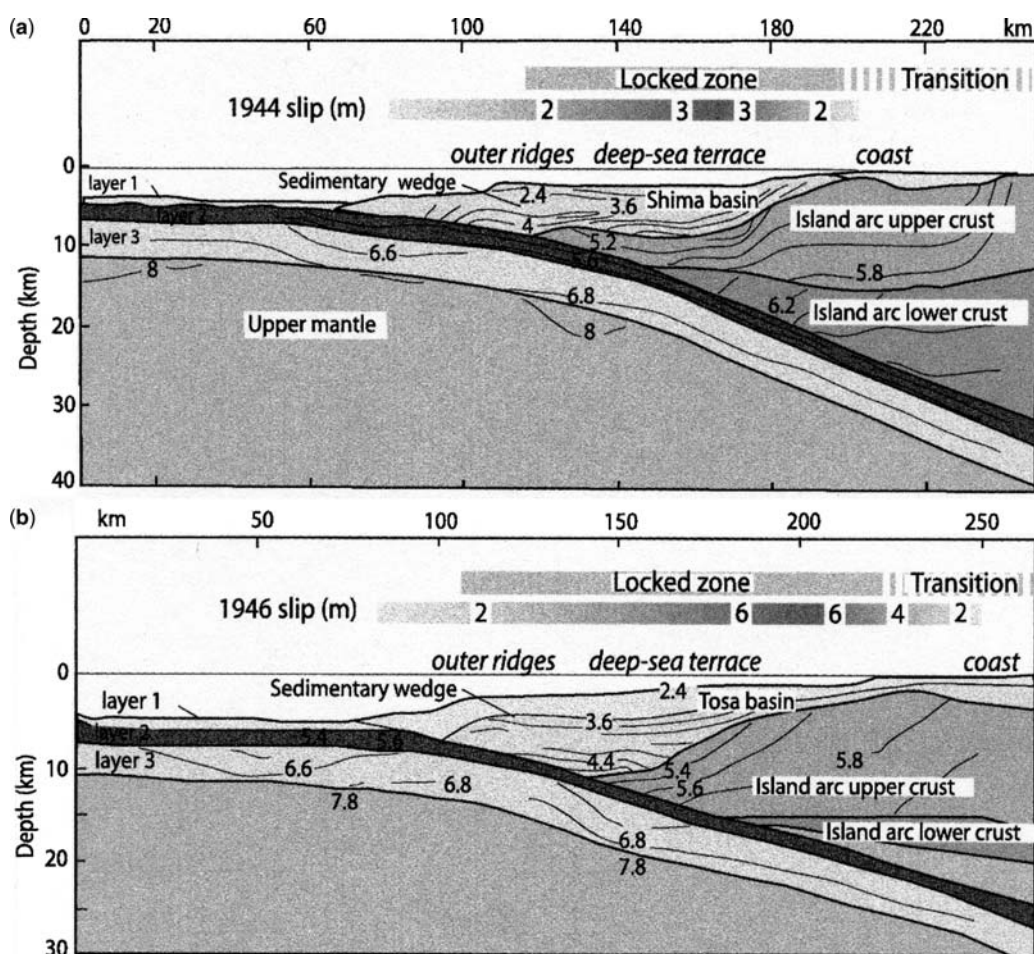
Geophysical studies of accretionary orogens, including seismic reflection, refraction, seismic

tomography and teleseismic data, have provided fundamental insights into structures of these orogens and their formation. Because of pronounced lateral variations across oceanic trenches and subduction zones, studies that combine multiple seismic and non-seismic data have been the most successful at determining the deep structure (e.g. Wannamaker *et al.* 1989).

### *Tonanki and Nankai subduction zones (Japan)*

Japanese subduction zones are among the best-studied circum-Pacific accretionary complexes, with a lithospheric structure that is considered

typical of many convergent plate margins. Two crustal models derived from seismic refraction–wide-angle reflection and gravity data collected across the Nankai Trough show the geometry of the subducting oceanic crust as it descends beneath the Japan volcanic arc (Fig. 4; Sagiya & Thatcher 1999; Kodaira *et al.* 2000; Nakanishi *et al.* 2002; Wells *et al.* 2003). These models define the geometry of the thick sedimentary basins that are located between the Nankai Trough and continental Japan. The subducting lower plate is divisible into three crustal layers separated from the upper mantle by a marked velocity jump. The wedge-shaped upper plate consists of a low-seismic velocity sedimentary package and the higher velocity igneous crust of the



**Fig. 4.** Seismic velocity ( $\text{km s}^{-1}$ ) structure of (a) the Tonanki subduction zone, site of the 1944 earthquake, and (b) the Nankai subduction zone, site of the 1946 earthquake. The relationship between the crustal structure and the locked zone is shown (Hyndman *et al.* 1995; Wang *et al.* 1995; Sagiya & Thatcher 1999; Kodaira *et al.* 2000; Nakanishi *et al.* 2002). The crustal structure is typical of many subduction zone complexes and includes a prominent low-seismic velocity sedimentary wedge and the higher-velocity igneous crust of the island arc (after Wells *et al.* 2003).

island arc, which is internally divisible into upper and lower crust on the basis of differences in seismic velocity.

### *Western margin of North America*

Western North America is composed of a series of accreted oceanic domains (Coney *et al.* 1980; Samson *et al.* 1989; Fuis & Mooney 1990; Fuis 1998; Fuis *et al.* 2008). A detailed seismic transect from the active plate boundary at the Aleutian Trench in the Gulf of Alaska to the orogenic foreland fold-and-thrust belt on the margin of the Arctic Ocean shows a history of continental growth through magmatism, accretion and underplating (Fuis & Plafker 1991; Fuis *et al.* 2008; Fig. 5a). The edge of the Pacific plate (labelled 'A' in Fig. 5a and b) has velocities of  $6.9 \text{ km s}^{-1}$  and is covered by a thin upper layer of the lower oceanic crust of the Yakutat terrane with velocities of  $6.1\text{--}6.4 \text{ km s}^{-1}$ . This difference results in a structurally induced crustal doubling and contrasts with the situation inboard where the subducting oceanic crust has a normal 5–10 km thickness (Fig. 5b). Previously accreted oceanic lithosphere (B1, B2; Fig. 5b) is Mesozoic to early Cenozoic in age and contains magnetic, intermediate-velocity rocks of the Peninsular terrane, as well as interpreted regions of the Kula plate, which have velocities of  $5.6\text{--}7.7 \text{ km s}^{-1}$  at depth. The Cenozoic accretionary prism (C; Fig. 5a and b) is the Prince William terrane and the Mesozoic accretionary prism (D'; Fig. 5b) is a tectonic wedge, and includes the Chugach terrane and Border Ranges ultramafic–mafic assemblage (BRUMA; Kusky *et al.* 2007a). The backstop to the Mesozoic prism (E; Fig. 5b) is composed of the Peninsular and Wrangellia terranes. Near the Arctic margin the Brooks Range reveals crustal thickening attributed to the development of a foreland fold-and-thrust belt that overlies a tectonic wedge of North Slope lithosphere (Fuis *et al.* 1997). Crustal underplating in southern Alaska and crustal thrusting in northern Alaska overlapped in the Palaeogene and can be related to an orogenic float model in which a décollement extended northward from the subduction zone in the south to the Brooks Range in the north (Oldow *et al.* 1990; Fuis *et al.* 2008).

Southern Vancouver Island in British Columbia (Fig. 6a) contains material accreted from the subducting Juan de Fuca plate (A) (Clowes *et al.* 1987, 1995, 1997; Hyndman *et al.* 1990; Fuis & Clowes 1993). The Crescent–Siletz terrane, which is similar to the Yakutat terrane in Alaska, as well as unidentified tectonically underplated rocks and possible fragments were accreted in the Cenozoic era (B2, B3; Fig. 6a), together with a possible remnant of an oceanic plateau from the

Palaeocene–Eocene. A thick wedge of Cenozoic accretionary prism lies near the toe of the overriding plate (C; Fig. 6a), whereas the Pacific Rim terrane is the Mesozoic accretionary prism (D; Fig. 6a). The Wrangellia terrane, the West Coast Plutonic Complex, and Nanaimo sediments in Georgia Strait form the backstop to the Mesozoic prism (E; Fig. 6a). An undivided lower crust is not defined, and other Cenozoic rocks include sedimentary strata on the continental shelf and Pacific Ocean basin (G; Fig. 6a). In contrast, the seismic transects in northern British Columbia and the Yukon show that the accreted Mesozoic and younger terranes are thin-skinned and constrained to the upper crust, and are underlain by a wedge of Proterozoic sedimentary rocks derived from cratonic Laurentia (Snyder *et al.* 2002, 2009). The deeper portions of the accreted blocks must have detached or underthrust the wedge during accretion. MacKenzie *et al.* (2005) reported evidence for ultrahigh-pressure garnet peridotite in the Canadian Cordillera that indicated that the thickness of the Proterozoic lithosphere was  $>100 \text{ km}$  (and possibly up to 150 km).

A transect from Santa Cruz to Modesto in the San Francisco Bay region (Fig. 6b) is representative of accreted regions in northern and central California (Fuis & Mooney 1990; Page & Brocher 1993). There is no actively subducting oceanic crust, but oceanic lithosphere that accreted in the Cenozoic (B3; Fig. 6b) is preserved. The accreted material is interpreted as a 5–18 km layer at the base of the crust that can be traced seaward to the Pacific oceanic crust, containing intermediate- to high-velocity rocks. Other transects from California contain lithosphere accreted in the Mesozoic, which includes ophiolite complexes from the Great Valley, characterized as magnetic, dense, intermediate- to high-velocity rocks. The Cenozoic accretionary prism (Fig. 6b) is present as unidentified Cenozoic sedimentary rocks interfaulted with the Franciscan assemblage. The Mesozoic accretionary orogen (D', E and G; Fig. 6b) comprises the Franciscan terranes, Coast Range ophiolite, the Great Valley sequence and Sierran foothills.

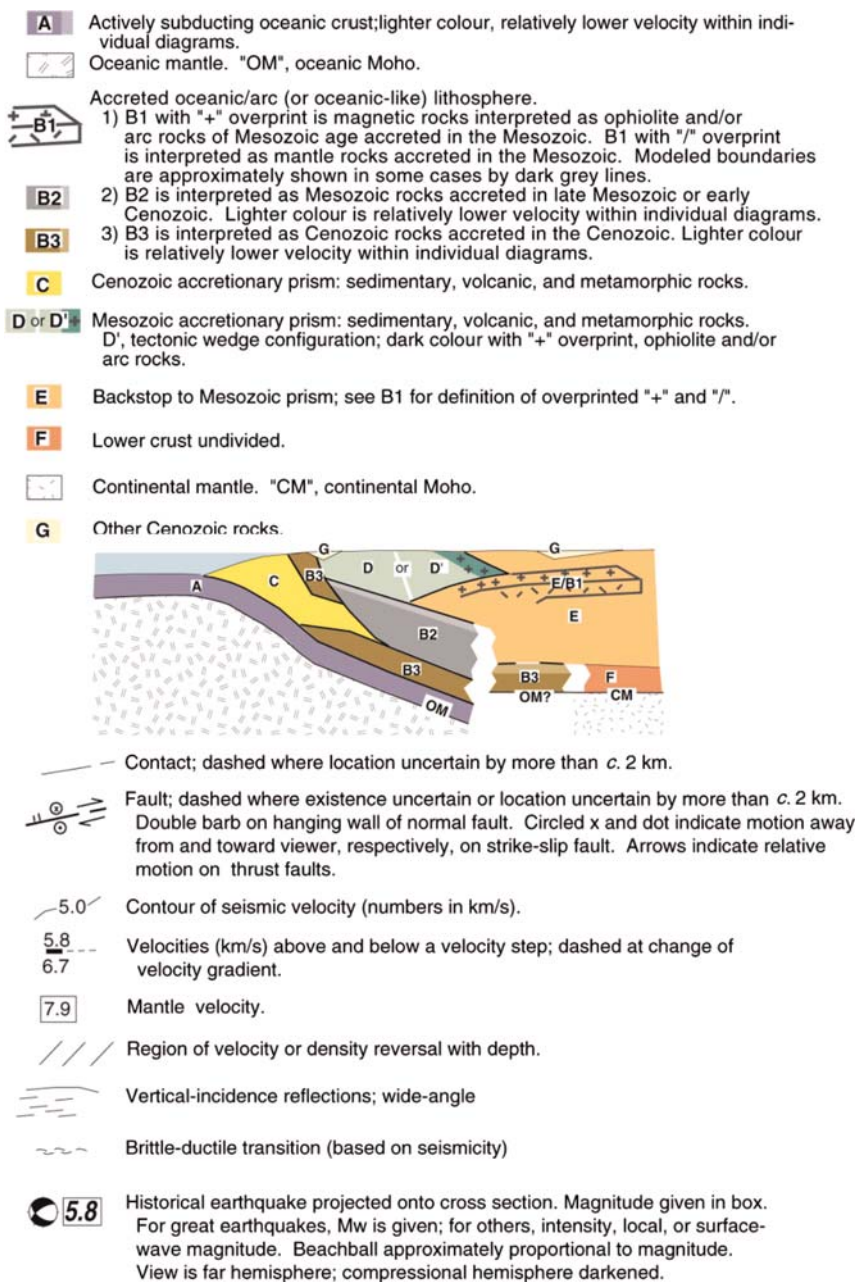
### *Songpan–Ganzi terrane (China)*

The triangular-shaped Songpan–Ganzi terrane in the central Tibetan plateau lies between the Qinling–Qilian orogen to the north and the Qiangtang terrane to the south (Fig. 7). The crust consists of a vast tract of highly deformed and locally metamorphosed Triassic deep marine sedimentary rocks interpreted as the fill of a diachronously closing remnant ocean basin (Nie *et al.* 1994; Ingersoll *et al.* 1995; Zhou & Graham 1996). This terrane formed during Jurassic deformation and





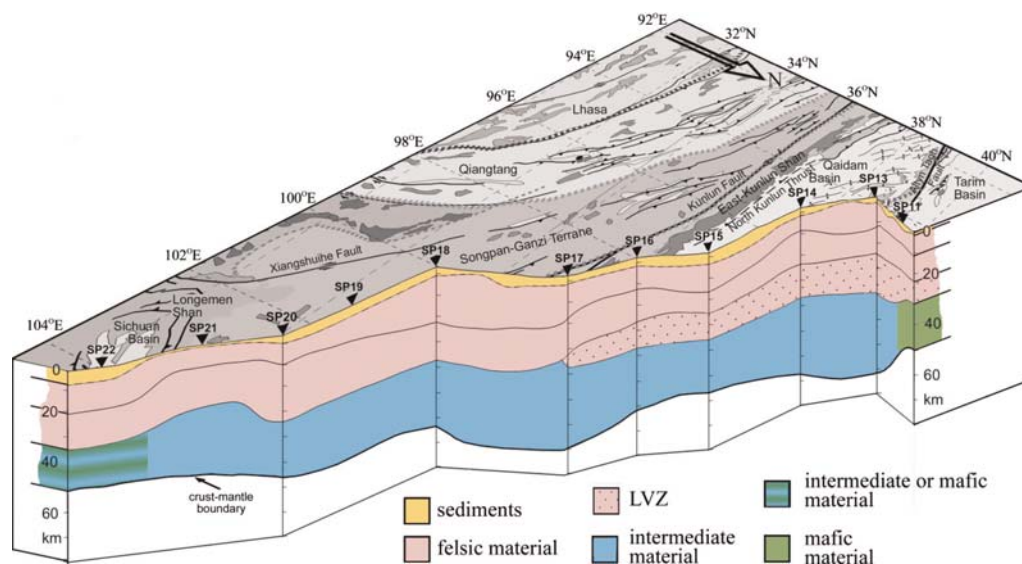
**Fig. 5.** (*Continued*).



**Fig. 5.** Deep structure of the accretionary margin of southern Alaska, North American Cordillera (Fuis 1998). (a) The Pacific plate subducts at a shallow angle beneath metasedimentary rocks of the Prince William terrane (C) and underplated oceanic crust (Yakutat terrane lower crust). This active subduction zone maintains a low angle beneath the 250 km wide accretionary terrane. (b) The transition from the Prince William terrane (C) to the Chugach terrane (D) is marked by a pronounced transition from metasedimentary rocks to thick imbricated sheets of igneous oceanic crust. North of the Chugach terrane, the crust thickens to at least 50 km beneath the arc-related Peninsular terrane. This composite accretionary margin is highly diverse in terms of the crustal lithology. Section (b) is offset 150 km across strike from section (a).







**Fig. 7.** Three-dimensional perspective view of the crustal structure beneath the Songpan–Ganzi accretionary orogen within a recent deep seismic transect from the southern Tarim basin to the Sichuan basin (Wang *et al.* in press). Colouring within the different layers indicates composition as derived from Poisson's ratio and P-wave velocity. Major faults and thrusts transected by the profile are qualitatively extrapolated at depth. The accreted upper and middle crust reaches a maximum thickness of 40 km beneath the Songpan–Ganzi terrane. The lower crust is 20–30 km thick and may consist of underthrust crystalline crust of continental affinity.

greenschist-facies metamorphism (Ratschbacher *et al.* 1996; Xiao *et al.* 1998) and was elevated above sea level at *c.* 20 Ma (e.g. Tapponnier *et al.* 2001). The terrane is inferred to be underlain by continental crust of the South China Block (Luo 1991). Recent seismic measurements show that the felsic upper crust (flysch?  $V_p = 5.95 \text{ km s}^{-1}$ ) is at least 10–20 km thick, and seismic velocities remain low ( $V_p = 6.25 \text{ km s}^{-1}$ ) to 40 km depth (Fig. 7; Wang *et al.* 2009). This implies that accreted material may attain a thickness of 40 km. Furthermore, the total crustal thickness is *c.* 70 km beneath the northern Songpan–Ganzi terrane (Fig. 7). The origin of the 20–30 km thick lower crust beneath this terrane is enigmatic, but the lack of surficial volcanic rocks indicates that an igneous origin is

unlikely. A more plausible model would involve underthrusting of crystalline continental crust from the north and east. We note that the thickness of the lower crust is three to five times greater than the 7 km thickness of typical oceanic crust. Crustal thickness decreases towards the eastern border of the Tibetan plateau and reaches *c.* 48 km beneath the Sichuan basin (SP22, Fig. 7). Despite more than 14 km of crustal thinning, the topography remains constant across the Songpan–Ganzi terrane at an elevation of *c.* 4 km and then abruptly drops by 3.4 km from the elevated Longmen Shan into the low-lying Sichuan basin (elevation 0.6 km). Thinning of the crust along this portion of the profile is therefore mainly caused by thinning of the upper crust ( $V_p = 5.95 \text{ km s}^{-1}$ ).

**Fig. 6.** Cross-sections of North American Cordillera (Fuis 1998). (a) Accreted margin across Vancouver Island, British Columbia, showing some features similar to southern Alaska (Fig. 5b), particularly with respect to the diversity of crustal lithologies, including accreted sedimentary (C) and volcanic rocks (B3 and D) and tectonically imbricated sheets of igneous oceanic crust (B2). The total volume of igneous rocks at this margin exceeds that of sedimentary rocks. The crust thickens to about 50 km some 200 km east of the deformation front. (b) Central California, southern San Francisco Bay region: Santa Cruz to Sierra Nevada foothills. This accretionary margin has undergone hundreds of kilometres of lateral displacement along several faults, most prominently the San Andreas Fault. Some elements in common with the margins of southern Alaska (Fig. 5) and British Columbia (a) are the presence of (1) accreted sedimentary rocks (San Simeon and Franciscan terranes), (2) an arc terrane (Salina) and (3) underplated oceanic crust (B3). Deep geophysical data across these and other accretionary systems provide strong evidence for pronounced lithological diversity within the crust. Legend as for Figure 5.



### *Seismic data from Precambrian accretionary orogens*

Seismic traverses across the Palaeoproterozoic accretionary orogens of the Svecofennian domain of NW Europe and the Hottah terrane of NW Canada have delineated mantle reflections dipping at about 30° from the Moho to about 100 km depths that are interpreted as fossil subduction zones (BABEL Working Group 1993b; Cook *et al.* 1999). Seismic reflection, refraction and geoelectric data imply the Svecofennian to be a collage of microcontinental blocks with intervening basins (Korja *et al.* 1993; Korja & Heikkinen 2005; Lahtinen *et al.* 2005, 2009). The reflection seismic data (BABEL, FIRE) revealed well-preserved pre-, syn- to post-collisional structures (e.g. a fossilized arc margin with an attached accretionary prism; BABEL Working Group, 1993a, b), whereas geochemical and petrogenetic studies suggest that the juxtaposed pieces were of Palaeoproterozoic origin. Comparative seismic reflection studies integrated with geological data for the Palaeoproterozoic Svecofennian, Scottish and Trans-Hudson orogens demonstrated in each case that 1.9–1.8 Ga lithosphere was wedged into crustal flakes that overrode Archaean margins (Snyder *et al.* 1996a). The Svecofennian accretionary orogen could serve as an analogue of the future accretionary-turned-collisional orogen that will be preserved when the Indonesian archipelago, with its variable size and age, is squeezed between Eurasia and Australia.

Crustal sections (Figs 4–7) cover a spectrum from active convergent plate margins to cratonized equivalents preserved in an accretionary orogen and reveal a range of processes in the development of continental crust. Actively subducting margins (Figs 4, 5 and 6a) reveal a coherent downgoing plate and an overlying forearc sedimentary wedge developed on an igneous arc basement, which at accreting margins form a backstop to offscraped sedimentary slivers. Stabilizing of the arc system occurs through underplating and accretion of oceanic material (Fig. 5, Yakutat terrane) and the progressive oceanward progression of the plate margin through accretion of trench sediments and of older arc systems (Figs 5 and 6). Termination of subduction as a result of changing plate kinematics (Fig. 6b) or continental collision and extensive crustal thickening (Fig. 7) results in final cratonization of the arc system.

### **Accretionary orogen types**

Accretionary orogens can be grouped into two end-member types (Fig. 3), namely retreating and advancing (see Royden 1993b), based on their contrasting

geological character, and modern examples from the eastern and western Pacific reflect a gross long-term kinematic framework with respect to an asthenospheric reference frame (Uyeda & Kanamori 1979; Dewey 1980; Lallemand *et al.* 2008). Retreating orogens are undergoing long-term extension in response to lower plate retreat (trench rollback), with respect to the overriding plate (Royden 1993a), resulting in upper plate extension, including back-arc basin opening as exemplified by the Tertiary history of the western Pacific (Taylor & Karner 1983; Leitch 1984; Schellart *et al.* 2006). Advancing orogens develop in an environment in which the overriding plate is advancing towards the downgoing plate at a rate equal to, or greater than, the rate of lower plate slab retreat, and this results in overall upper plate compression (Lallemand *et al.* 2005, 2008). For the eastern Pacific this corresponds to westward motion of the North and South American plates (Russo & Silver 1996a; Silver *et al.* 1998; Oncken *et al.* 2006a). This resulted in accretion (and strike-slip motion) of previously rifted arc and microcontinental ribbons, and the development of extensive retro-arc fold-and-thrust belts (e.g. Johnston 2001). Husson *et al.* (2008) argued that trench advance in South America is driven by high Andean topography and that this westward push is strong enough to shear the entire Pacific upper mantle with a surface velocity of 30 mm a<sup>-1</sup>.

Advancing and retreating settings of accretionary orogens are simplified 2D representations of what is likely to be a more complex response to an overall environment of oblique convergence. Oblique accretion has played an important role in the assembly of the Cordillera in western North America (Johnston 2001; Colpron & Nelson 2006, 2009; Colpron *et al.* 2007), and probably also in many other orogens.

### **Retreating orogens**

Retreating plate margins develop where the rate of rollback of the downgoing plate exceeds the rate of advance of the overriding plate, resulting in crustal extension in the latter. Rollback is driven by the negative buoyancy of the downgoing slab with respect to the underlying mantle, which in turn induces a backward sinking of the slab and retreat of the slab hinge, causing the overriding plate to extend (Elsasser 1971; Schellart & Lister 2004).

Upper plate extension leads to the development of intra-arc and arc-flanking basins culminating in rifting of the arc and development of back-arc basins (Dickinson 1995; Marsaglia 1995; Smith & Landis 1995). Many retreating orogens have multiple back-arc basins that generally, but not always, young outboard, towards the retreating plate margin. The

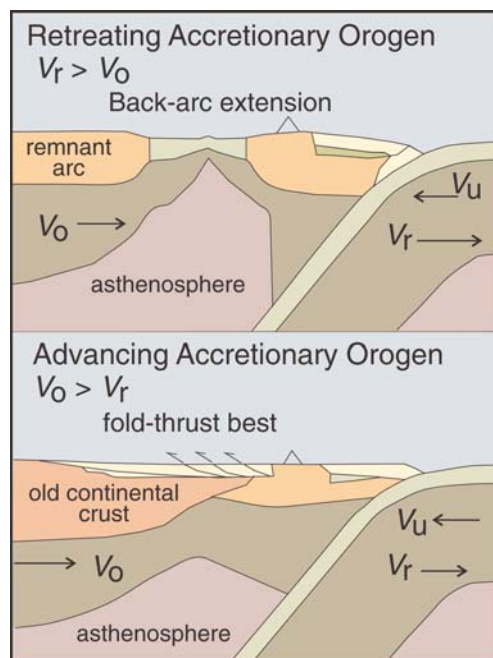
preservation and incorporation of such basin fills within a retreating accretionary orogen is dependent on features or processes active during continuing subduction (e.g. thickness of sediment cover on the downgoing plate, rate of rollback) and the character of tectonothermal events that deform and stabilize the orogen in the rock record.

The process of rollback of the downgoing plate and the consequent development of back-arc basins is well developed in the SW Pacific. Between 82 and 52 Ma east- and NE-directed rollback of the Pacific plate by some 750 km was accommodated by opening of the New Caledonia, South Loyalty, Coral Sea and Pocklington back-arc basins (Schellart *et al.* 2006). Change in the relative motion of Pacific–Australia at 50 Ma resulted in subduction of the South Loyalty and Pocklington basins. This subduction was followed by two additional phases of rollback of the Pacific slab of some 650 and 400 km during opening of the South Fiji and Norfolk basins between 25 and 15 Ma and the Lau Basin from 5 to 0 Ma, respectively (Schellart *et al.* 2006). Slab rollback and back-arc basin extension is also argued to have played a fundamental role in the development and subsequent cratonization of the arc systems in the Terra Australis orogen in eastern Australia (Collins 2002a; Foster *et al.* 2009). The eastern third of Australia is composed of arc systems that developed along, and were accreted to, the rifted margin of East Gondwana following the initiation of subduction in the late Neoproterozoic (Cawood 2005). Subduction is inferred to have commenced at or near the continent–ocean boundary of East Gondwana. The width of eastern Australia and New Zealand prior to opening of the Tasman Sea was some 2000 km. Since that time, this region has undergone overall orogenic foreshortening of the order of 50%, but local foreshortening may have been considerably higher; for example, the western Lachlan segment of the Terra Australis orogen has a current width of 330 km and restored original width of between 800 and 1200 km (Gray & Foster 2006; Foster & Gray 2007). Thus, overall rollback of the proto-Pacific plate since the start of subduction towards the end of the Neoproterozoic until now is of the order of 6000 km, comprising some 4000 km during the Palaeozoic and Mesozoic that is preserved in the geological record of Australia and New Zealand and another 1800 km in the Cenozoic as documented by Schellart *et al.* (2006) in the SW Pacific. Rollback has not been continuous throughout this time frame and was undoubtedly interspersed with periods when rollback was either stationary or, with respect to the overriding plate, was advancing and driving periods of orogenesis (Collins 2002a). Extension was accommodated by both back-arc opening (Coney *et al.* 1990; Coney

1992; Fergusson & Coney 1992) and offscraping and accretion of material from the downgoing plate (Cawood 1982; Fergusson 1985).

### Advancing orogens

Advancing orogens are characterized by widespread crustal shortening and uplift (Fig. 8), including the development of retroarc fold-and-thrust belts. The modern South American Cordillera is an example where deformation patterns can be placed into a plate-tectonic framework. Oncken *et al.* (2006b) provided a quantitative analysis of the spatial and temporal distribution of deformation in the Central Andes, and concluded that the amount and rate of shortening of the upper plate as well as lateral variability at the leading edge of the plate is primarily controlled by the difference between the upper plate velocity and the oceanic plate slab rollback velocity (see Russo & Silver 1996a; Silver *et al.* 1998; Schellart 2008). This allows the upper plate to override the downgoing plate, resulting in coupling and deformation across the plate boundary, including subduction erosion (Scholl & von Huene



**Fig. 8.** Accretionary orogen types (after Cawood & Buchan 2007). For the retreating type the velocity of slab retreat ( $V_r$ ) for the underriding plate ( $V_u$ ) is greater than that of the overriding plate ( $V_o$ ), whereas for the advancing orogen the velocity of the overriding plate is greater.

2009). Furthermore, Oncken *et al.* showed that the influence of differential trench–upper plate velocity is modulated by factors such as a phase of high trench sediment accumulation that reduced coupling across the plate boundary between about 45 and 33 Ma and a stage of reduced slab dip between 33 and 20 Ma that accelerated shortening. The magnitudes of post-Eocene crustal shortening across the Andes reach a maximum value of some 250–275 km in the central Andes and decrease to the north and south (Oncken *et al.* 2006b). The analysis of Schellart *et al.* (2007; see also Schellart 2008) suggests that this lateral variation in shortening may be related to along-strike variations in the rate of trench rollback, relative to the westward motion of the overriding South American plate. Schellart *et al.* (2007) used a global analysis of subduction zone width to show that trench migration rate is inversely related to slab width and depends on proximity to a lateral slab edge. Thus, for the 7000 km long South American trench, slab retreat is greatest at the northern and southern ends of the trench and least in the Central Andes in the vicinity of the Bolivian orocline.

The Central Andes has remained essentially stationary for the last 25 Ma and is the site of greatest crustal thickening. However, based on palaeomagnetic data, formation of the Bolivian orocline occurred in the last 10 Ma (Rousse *et al.* 2003), and not over the 25–50 Ma timeframe required by the model of Schellart *et al.* (2007). Russo & Silver (1996b) proposed that lateral variations in rollback are probably accommodated by trench-parallel flow in the mantle of the subducting slab. Seismic anisotropy beneath the Nazca Plate suggests trench-parallel mantle flow in the north and south but negligible flow in the central region, below the Bolivian orocline. Alternatively, Iaffaldano & Bunge (2008) argued that topographic load of mountain belts leads to increased frictional forces between the downgoing and overriding plates and that, specifically, uplift of the Andes over the last 10 Ma was linked to the slowdown in convergence between the Nazca and South American plates over this timeframe (see Iaffaldano *et al.* 2006).

Foreland fold-and-thrust belts, located inboard of the magmatic arc (Jordan 1995), are well developed in advancing orogens as a result of horizontal shortening, crustal thickening and resultant loading. They are well developed along the continental interior of the North and South American cordilleras.

## Tectonic switching

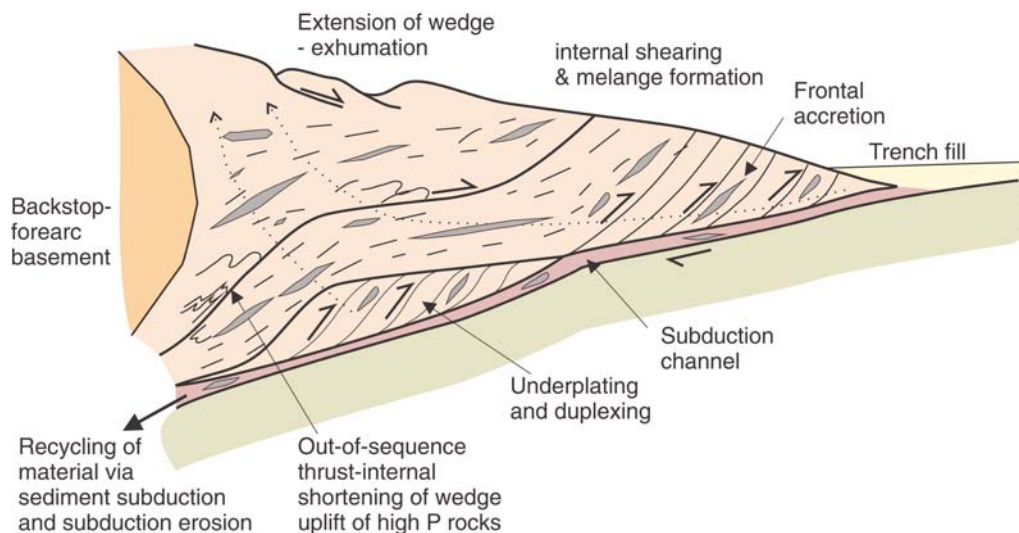
Accretionary plate margins and orogenic systems can switch between phases of advance and retreat.

Collins (2002a) proposed that episodes of orogenesis in the Lachlan segment of the Terra Australis orogen was driven by periodic advance of the downgoing plate through flat-slab subduction of an ocean plateau, which was otherwise undergoing long-term retreat with respect to the overriding plate. Lister *et al.* (2001) suggested that an accretionary orogen can undergo multiple cycles of tectonic mode switching (see also Beltrando *et al.* 2007). They proposed that accretion of a continental ribbon at a convergent plate margin results in shortening and burial of the overriding plate followed by a stepping out of the subduction zone beyond the accreted terrane and a new phase of rollback of the downgoing plate causing extension and exhumation in the overriding plate. This concept was extended by Lister & Forster (2006) into two types of tectonic mode switches: pull–push cycle, in which a retreating margin changes to an advancing margin, and the opposing push–pull cycle, in which the margin changes from advancing to retreating.

## Sedimentary successions and accretionary orogens

### Accretionary prisms

Structures formed during steady-state subduction are focused at the interface between the overriding and downgoing plates and are associated with the offscraping and underplating of material from the downgoing plate to form a subduction complex–accretionary prism (Fig. 9). Material accreted to the overriding plate can be subsequently removed and carried into the mantle through subduction erosion along the subduction channel (Scholl *et al.* 1980; Scholl & von Huene 2007). The subduction channel is the boundary zone between the upper and lower plates (Shreve & Cloos 1986; Beaumont *et al.* 1999). Variations in the strength and width of the subduction channel, which in part reflect the strength and thickness of material on the downgoing plate, can affect the behaviour of the overriding plate (De Franco *et al.* 2008). The interplay of advancing v. retreating accretionary plate margin with either the offscraping of material from the downgoing plate and its incorporation into an accretionary prism or the subduction (or erosion) of this material leads to the recognition of four types of plate margins (De Franco *et al.* 2008): accretionary prism with back-arc compression (e.g. Alaska, Sumatra, Nankai margin of Japan); erosive margin with back-arc extension (e.g. Central America, Marianas, Tonga); accretionary prism with back-arc extension (e.g. Lesser Antilles, Aegean, Makran); erosive margin with back-arc compression (e.g. Peru, Honshu margin of Japan, Kurile).



**Fig. 9.** Schematic section of accretionary prism showing sediment accretion through frontal accretion and basal accretion, and internal deformation of the wedge through contraction and extension (adapted from Kusky *et al.* 1997b). Particle paths are simplified net vectors and are drawn relative to backstop (see van Gool & Cawood 1994). Backstop is arc basement, and is composed of magmatic arc igneous rock or ophiolitic material.

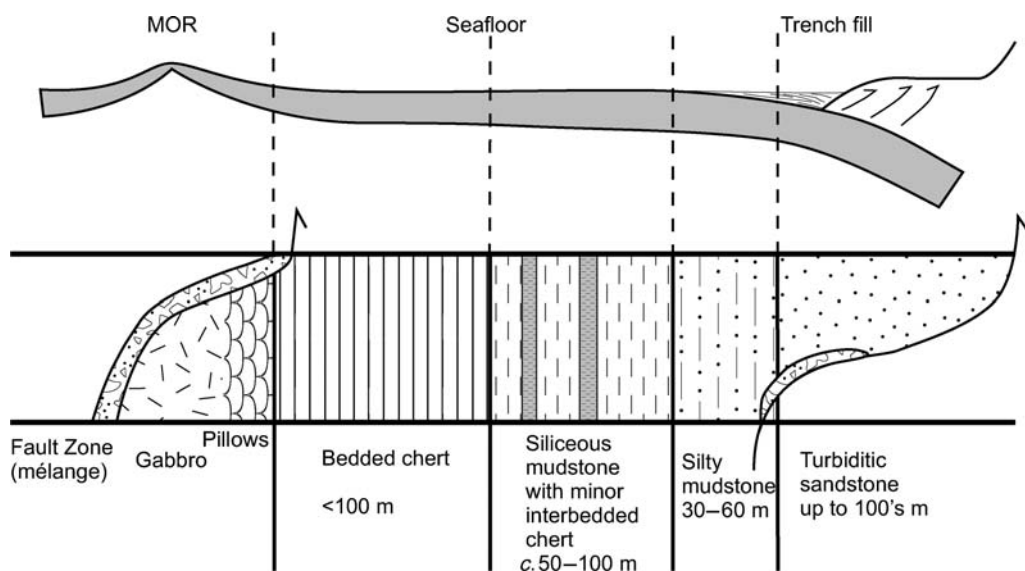
Accretion of material results in the retreat of the trench axis seaward, away from the margin, and the active widening of the margin with time through progressive accretion from the downgoing plate (e.g. Seeley *et al.* 1974). According to Scholl & von Huene (2007), of the c. 42 000 km of active convergent margin subduction zones only some 30% have well-developed subduction complexes, and these are commonly characterized by a trench floor with a well-developed turbidite sequence and an orthogonal convergence rate of less than 40–50 km Ma<sup>-1</sup>. Examples include Nankai, East Alaska, Cascadia and Sumatra–Andaman margins. Some high-latitude convergent margins (southern Chile and Alaska), contain small, young prisms developed through enhanced input of glacial age turbidites to trenches (Scholl & von Huene 2009). In southern Chile, the long-term processes on the margin are non-accreting or erosive (Bangs & Cande 1997).

A range of physical conditions extends from the trench floor to deep within the subduction complex. High fluid pressure and shearing lead to a spectrum of structures within the prism ranging from discrete thrust imbrication of relatively coherent sedimentary packages to chaotic mélangé formation. Where least disrupted, the sequence displays a distinctive ocean plate stratigraphy consisting, from bottom to top, of a succession of mid-ocean ridge basalt (MORB), chert, hemipelagic mudstone, turbidite or sandstone and conglomerate (Fig. 10). This sequence records the history of sedimentation on

the ocean floor as it travels from a mid-ocean ridge spreading centre to a trench. The biostratigraphy, structure, and geochemistry of this offscraped sequence has been studied in, for example, Phanerozoic circum-Pacific orogens in Japan (Isozaki *et al.* 1990; Matsuda & Isozaki 1991; Kimura & Hori 1993; Kato *et al.* 2002), California (Cowan & Page 1975; Sedlock & Isozaki 1990; Isozaki & Blake 1994), Alaska (Kusky & Bradley 1999; Kusky & Young 1999), Eastern Australia (Cawood 1982, 1984; Fergusson 1985) and New Zealand (Coombs *et al.* 1976; Mortimer 2004). Imbricated ocean plate stratigraphy is also increasingly recognized in Precambrian orogens; for example, in the 600 Ma Mona Complex of Anglesey, North Wales (Kawai *et al.* 2006, 2007; Maruyama *et al.* in press), the 2.7 Ga Point Lake greenstone belt (Kusky 1991), and possibly the 3.5 Ga chert–clastic sequence in the Archaean Pilbara craton (Kato *et al.* 1998; Kato & Nakamura 2003) and the 3.8 Ga Isua greenstone belt, West Greenland (Komiya *et al.* 1999). However, the validity of the Pilbara successions as an imbricated ocean-plate has been questioned by Van Kranendonk *et al.* (2007), who favoured a plume-related intracontinental setting. These rocks are interlayered with felsic volcanic rocks, and Williams & Collins (1990) have pointed out that they are commonly intruded by granites of the same age.

Systematic disruption of the ocean plate and trench sequence results in the production of broken





**Fig. 10.** Schematic section through a coherent thrust slice of offscraped ocean plate showing lithotectonic associations that develop on the plate as it moves from a mid-ocean ridge spreading centre to a trench.

formation and *mélange* (Greenly 1919; Hsü 1971). Results from southern Alaska and eastern Australia have shown that controls on whether chaotic *mélange* or coherent *flysch* are accreted at convergent margins may lie in the thickness of the sedimentary pile being subducted on the downgoing plate (Fergusson 1984; Kusky *et al.* 1997b; Kusky & Bradley 1999; Sisson *et al.* 2003). Downgoing plates with a thin sediment cover tend to concentrate shear strain in a thin zone that includes oceanic basement structural highs, whereas plates with thick sediment cover tend to disperse shear strains through a thick stratigraphic section with resulting less obvious deformation.

Bathymetric highs on the downgoing oceanic plate, such as guyots, may be offscraped into, and disrupt, the accretionary prism. Modern examples of seamount subduction appear to be associated with both sedimentary and tectonic disruption of the accretionary wedge (Ballance *et al.* 1989; Cawood 1990). Inferred seamount material, including alkali basalt and oceanic reef limestones, occurs in late Palaeozoic to Mesozoic accretionary prisms in Japan (Isozaki *et al.* 1990; Tatsumi *et al.* 1990; Isozaki 1997), including the huge late Jurassic Sorachi oceanic plateau, which was accreted in the early Cretaceous (Kimura *et al.* 1994). The eclogitic slab on the Sanbagawa mountains was derived from part of an oceanic plateau that was accreted, subducted and exhumed (Maruyama, pers. comm.). The Izu–Bonin arc collided with the Honshu arc in the late Cenozoic to give rise to spectacular

indentation and curvature of the whole of central Japan (Soh *et al.* 1998).

#### *Differentiating sedimentary successions within the accretionary orogen*

Continuing convergent plate margin processes (subduction, magmatism, accretion, tectonic erosion), as well as subsequent processes involved in the incorporation and stabilization of convergent plate margin elements within continental lithosphere, destroy the original geometry so that accretionary orogens rarely contain a continuous and idealized distribution of lithotectonic elements. This structural complication may lead to uncertainty in ascertaining original settings and affinities for these elements, particularly in relation to their previous tectonothermal evolution, location of the original arc, apparent lack of accretionary prisms, occasional large dimension, and the composition and tectonic setting of the ophiolite slivers.

Many accretionary orogens, particularly the larger, less well-understood varieties, contain vast accumulations of deep-water turbidites that are tectonically intercalated with arc terranes and intruded by post-tectonic granites. The critical question here is whether these turbidites are accretionary wedge material, with ophiolitic slivers interpreted as ocean-floor lithosphere derived from the subducted plate, or whether they are back-arc basin fills, inter-layered with the ophiolitic slivers representing

remnants of the back-arc basin (see Foster & Gray 2000; Collins 2002a; Foster *et al.* 2009).

One of the major uncertainties has been the origin and timing of the heat budget within such turbidite assemblages, as many display a high-temperature ( $T$ ), low-pressure ( $P$ ) secondary mineral assemblage. If the turbidites are interpreted as offscraped subduction-related sequences then the mineral assemblage requires the migration of the magmatic arc, the inferred source of the heat, into the subduction complex (see Matsuda & Uyeda 1971) during oceanward propagation of the plate boundary during slab retreat. In this situation, the models that envisage accretionary orogens simply as subduction–accretion complexes require that the high- $T$  regimes associated with arc magmatism should be superimposed upon low- $T$  high- $P$  regimes, including blueschist-facies terranes related to subduction accretion. Such overprints have been documented in the Chugach complex in Alaska and the New England segment of the Terra Australis orogen (Dirks *et al.* 1992, 1993), but many high- $T$ , low- $P$  metamorphic terranes bear no record of such overprinting. It is possible that the high- $T$  metamorphism was sufficient to destroy all high- $P$  evidence, but equally, many extensive turbidite complexes preserve original bedding and stratigraphic continuity over large areas, so it can be demonstrated that they never experienced high- $P$  metamorphism associated with an evolving prism. In such instances, such turbidite piles could have filled back-arc basins, with the first metamorphism being associated with emplacement of igneous rocks, within either an arc (intra-arc basin) or a back-arc setting.

Another determinant of original setting of accretionary orogen turbidite assemblages is sedimentary lithotype. Accretionary prisms typically receive detritus from the adjacent arc and hence, commonly, are lithic-rich, whereas back-arc basins are likely to include detritus shed from the adjacent continental interior, and are likely to be more quartzose (Dickinson & Suczek 1979; Dickinson & Valloni 1980; Cawood 1983, 1990, 1991a, b; Dickinson 1985). Accordingly, arc–trench sandstones (forearc basins–accretionary prisms) also should contain a much higher proportion of young arc-derived zircons than old cratonic grains (Cawood *et al.* 1999; Cawood & Nemchin 2001). None the less, this is not always definitive, as far-travelled continental detritus can be deposited in accretionary prisms, such as the Barbados Ridge in the Lesser Antilles, which largely consists of Andean detritus shed via the Amazon (Parra *et al.* 1997).

The composition and structural relations of ophiolites are also probably discriminants between accretionary prisms and back-arc basins. Greenstones of accretionary prisms are typically fault-bound slivers ranging from those at the base of a

relatively coherent thrust sheet (Fig. 10) to dismembered tectonic lozenges in a mélangé. They can show either MORB or ocean island basalt (OIB) geochemical signatures (e.g. Cawood 1984), with the former rocks being detached from their base and occurring at the bottom of an ocean-plate sedimentary sequence (Fig. 10), where stratigraphic relations are preserved. Ocean island basalts can occur interstratified within the sedimentary sequence and may, if originating as guyots, be overlain or associated with limestone lenses. In contrast, back-arc basins are likely to contain sills and flows of basalts, which typically preserve original contact relations. Moreover, these basalts are MORB-like, but with a subtle subducted slab flux component, evident as elevated large ion lithophile element (LILE) abundances, which form the typical spiked pattern of subduction-related arc basalts on spidergrams, although this pattern is more subdued than that of arc basalts (Jenner *et al.* 1987; Hawkins 1994; Collins 2002b). In the 1970s and 1980s, such subtle LILE additions were commonly perceived as metasomatic effects from metamorphism, or as the products of melting mantle lithosphere enriched during a previous subduction event. However, through the Ocean Drilling Program, it became evident that these basalts were the dominant type of oceanic back-arc basins (e.g. Smellie 1994). These basalts also happen to be the most common type in retreating accretionary orogens.

The presence or absence of silicic tuff horizons is another possible discriminant of sedimentary successions in supra-subduction zone settings. Back-arc basins reflect the transitional tectonic stage between extending arc and formation of oceanic back-arc basins. They commonly receive the volcanic products associated with crustal melting during the initial stages of back-arc extension, and the explosive nature of arc magmas means that pyroclastic and volcanoclastic detritus is easily redistributed into the back-arc, and directly overlies the oceanic lithosphere and may be interstratified with, and dispersed within, any hemi-pelagic successions. In contrast, the ocean plate sequence incorporated into accretionary prisms, commonly located at least several hundred kilometres outboard from the prism, is less likely to contain volcanic layers, particularly ash flow ignimbrites. Accordingly, the presence of silicic volcanic rocks (with or without mafic counterparts), particularly in the deeper part of the stratigraphic succession, and intermittent silicic tuff horizons higher in the turbidite pile, are indicators of back-arc basin environments. It should be noted, however, that tuffs occur interbedded with cherts as part of an ocean plate stratigraphy in the Ordovician Ballantrae ophiolite in Scotland, which were then imbricated into an interpreted forearc accretionary environment (Sawaki *et al.* in press).

## Metamorphic patterns in accretionary orogens

Miyashiro (1961, 1972, 1973*b*) highlighted that convergent plate margins are characterized by two regional, paired metamorphic belts of inferred similar age but contrasting mineral assemblages representing discrete  $P$ – $T$  regimes. These are a high- $P$  belt formed under a low geothermal gradient, which lies on the oceanward side of a low- $P$  belt formed under a high geothermal gradient (Oxburgh & Turcotte 1970, 1971). The high- $P$  belt was equated with the zone of the accretionary prism and the low- $P$  belt with the magmatic arc and back-arc (Miyashiro 1972, 1973*b*). This duality of metamorphic belts is a characteristic feature of accretionary plate margins (Ernst 2005). The age equivalence and primary across-strike setting of paired belts was, however, critically investigated by Brown (1998*b*) for part of the Japanese arc. He proposed that the inboard, low- $P$ –high- $T$  Ryoke Belt and the outboard high- $P$ –low- $T$  Sambagawa Belt originally lay along strike and were juxtaposed by sinistral strike-slip motion along the Median Tectonic Line. The high- $T$  metamorphism in belts such as the Ryoke and Abukuma in Japan are, according to Brown (1998*a*), the result of ridge subduction and slab window formation just inboard of the trench and downgoing plate (Bradley *et al.* 2003). This represents an alternative mechanism to the magmatic arc and back-arc for producing high- $T$  metamorphism. The distribution of low- $P$ , high- $T$  metamorphic assemblages and any associated magmatism will be limited to the site of ridge subduction, and age relationships will be diachronous, reflecting ridge–trench migration.

## ‘Back-arc basin’ orogeny

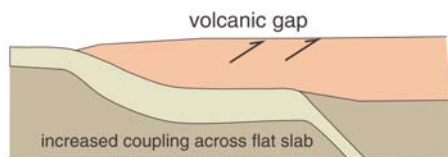
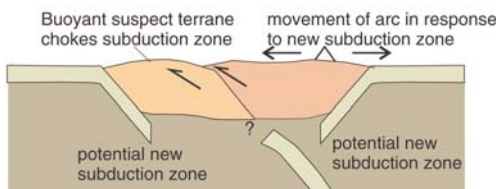
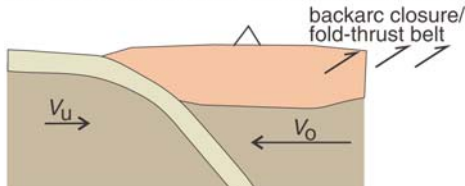
One of the more enigmatic features of accretionary orogens is the presence of peak (high- $T$ ) metamorphic assemblages during contraction (Thompson *et al.* 2001; Collins 2002*a*), which is impossible to reproduce during the structural evolution of an accretionary prism (Jamieson *et al.* 1998). Hyndman *et al.* (2005) realized that back-arcs were always regions of high heat flow, irrespective of whether the orogen was advancing or retreating. They showed that around the entire Pacific Rim, elevated heat flow and thin crust are normal in back-arcs. Even in the North American Cordillera, where high mountains, fold-and-thrust belts, and foreland basins attest to long-term crustal shortening associated with an advancing orogen, the crust of the Cordillera is only 30–35 km thick and heat flow ( $c. 75 \text{ mW m}^{-2}$ ) is almost twice that of the adjacent craton ( $c. 40 \text{ mW m}^{-2}$ ). The high heat flow exists

because the entire lithosphere is only 50–60 km thick (see also Currie & Hyndman 2006; Currie *et al.* 2008). This hot, thin zone of lithospheric weakness becomes the focus of shortening during periods of increased compressive stress, and the heat is a natural consequence of shallow convection in the hydrous mantle wedge above the subducting plate (Hyndman *et al.* 2005). As a result, compressional features in accretionary orogens, which form above the subducting plate, develop up to 1000 km away from the accretionary prism.

Furthermore, the high heat flow and corresponding rheological weakness of the back-arc region make it the likely site for the focusing of deformation within the accretionary orogen system. Deformation in the eastern Myanmar–western Thailand region of SE Asia (Shan–Thai block) is focused within a pre-existing back-arc basin subjected to oblique strain related to the India–Asia collision (Morley 2009). Strain partitioning is characteristic of this region and is heterogeneous, with adjoining regions of cold lithosphere, corresponding to a forearc basin setting (e.g. Central Basin in Myanmar), remaining undeformed and the site of continuing sedimentation.

## Cratonization and driving mechanisms of orogenesis in accretionary orogens

Conversion of convergent plate margins into stable continental crust typically involves deformation and crustal thickening during one or more tectonothermal events. This conversion occurs in an environment of continuing plate convergence such that orogenesis involves transfer and concentration of stress in the upper plate through transitory coupling across the plate boundary (Cawood & Buchan 2007). Potential mechanisms of coupling include: (1) subduction of buoyant oceanic lithosphere (flat-slab subduction); (2) accretion of buoyant lithosphere (terrane accretion); (3) plate reorganization causing an increase in convergence across the boundary (Fig. 11). The effects of flat-slab subduction (e.g. Ramos *et al.* 2002) and suspect terrane accretion (e.g. Maxson & Tikoff 1996) should be spatially limited to the region of either the flat slab or the accretion zone, which in turn should result in short-lived orogenesis and/or diachronous events that migrate along the convergent margin in harmony with the subducted plate movement vector. These are local mechanisms in which the effect (e.g. orogenesis) is directly linked to the cause (buoyant slab causing coupling). These mechanisms can be observed in modern orogens (Kay & Mpodozis 2001; Mann & Taira 2004) and are commonly invoked as a mechanism in the geological record (e.g. Holm *et al.* 2005; St-Onge *et al.*

**(a) Flat slab subduction****(b) Terrane accretion****(c) Global plate kinematic reorganization**

**Fig. 11.** Three possible modes of plate coupling that can drive orogenesis in an accretionary orogen: (a) flat-slab subduction; (b) terrane accretion; (c) plate reorganization leading to increased convergence.

2009). Accretion of arc and continental fragments has played a major role in the growth of SE Asia and the North American Cordillera (Coney *et al.* 1980; Metcalfe 1996a, b, 2002; Hall 2002, 2009). In contrast, the effects of plate reorganization are broader in scale and should extend synchronously along an orogen or plate boundary, albeit with variable effects, and reflect widespread and possibly long-term changes in orogenic character. Plate reorganization may traverse plate boundaries and be inter-orogen in extent. This reorganization is a regional mechanism in which the cause (plate reorganization) is not directly preserved at the site of its effect (orogenesis).

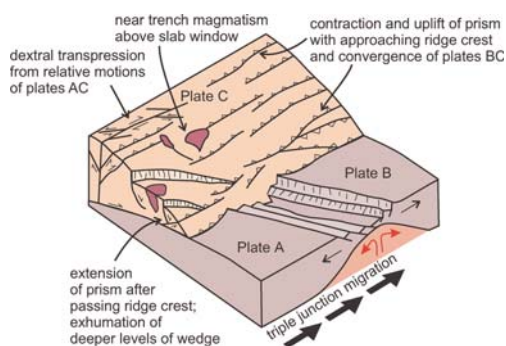
Crucial in establishing the potential contribution of these different coupling mechanisms to orogenesis is a detailed understanding of the spatial and temporal distribution of the tectonothermal effects of orogenic events in accretionary orogens. Synchronicity and cyclicity of accretionary orogenesis on an intra- and inter-orogen scale would suggest plate reorganization as the possible driver for orogenesis. Diachroneity, and/or orogenic events or belts restricted within an orogen would favour local events associated with terrane accretion or flat-slab subduction, or ridge subduction.

### *Subduction of buoyant oceanic lithosphere (flat-slab subduction)*

Subduction of buoyant oceanic lithosphere will induce a flattening of the slab and can result from either the migration of young lithosphere associated with a spreading ridge or the thickened lithosphere of a hotspot (Fig. 11a; Gutscher *et al.* 2000; Gutscher 2002). Flat-slab subduction is currently occurring in a number of regions around the world, notably in southern Japan and South America (Ramos *et al.* 2002; van Hunen *et al.* 2002). Orogenesis driven by flat-slab subduction should be spatially limited to the region above the buoyant subducting lithosphere and will be relatively short-lived and diachronous, moving in concert with the subducting plate movement vector. Kay & Mpodozis (2001, 2002) argued that the thermal consequences of changing slab dip, combined with subduction of the Juan Fernandez Ridge hotspot track, have left a predictable magmatic and mineralization record in the Andes. Murphy *et al.* (1998) suggested that plume subduction led to flattening of the downgoing slab, generating 'plume-modified orogeny' (see Murphy *et al.* 1999, 2003; Dalziel *et al.* 2000). Flat-slab subduction and the resultant transitory plate coupling has been invoked as an important mechanism of orogenesis in the accretionary Lachlan orogen (Collins 2002a), in the North American Cordillera (Dickinson & Snyder 1978; Saleeby 2003), and in development of the Japanese accretionary orogen (Osozawa 1988; Underwood 1993; Isozaki 1996; Maeda & Kagami 1996; Brown 1998a). The mechanism for increased buoyancy with flat-slab subduction depends on the nature and rate of input of the thermal anomaly (Bradley *et al.* 2003; Kusky *et al.* 2003). Ridge subduction will be associated with a progressive increase in buoyancy, whereas plateau or hotspot subduction will induce a rapid change in crustal thickness and, hence, buoyancy. Subduction of plateaux and ridges has been proposed as a mechanism of orogenic growth in the Palaeoproterozoic Birimian terranes (Abouchami *et al.* 1990), and in the Archaean Zimbabwe craton (Kusky & Kidd 1992).

Ridge subduction is a diachronous process that typically involves a major change in plate convergence vectors between the upper plate and two subducting plates, with the change in plate convergence vectors across the subducting spreading ridge separated by a period of heating and igneous intrusion in the forearc and accretionary prism (above the slab window; Fig. 12). Such ridge–trench interaction played a major role in the development of the Tertiary North American Cordillera from Kodiak Island, Alaska, to Vancouver Island, British Columbia (Bradley *et al.* 2003; Sisson *et al.* 2003).





**Fig. 12.** Oblique view of hypothetical ridge–trench–trench triple junction, showing how structures in the upper plate will change with the passage of the triple junction, reflecting kinematic coupling between plates B and C before ridge subduction, and plates A and C after ridge subduction (adapted from Kusky *et al.* 1997a).

Deformation can be intense and is related not only to the plate convergence vectors (surface forces) but also to a change in dip of the subducting lithosphere as the ridge migrates along the trench (Kusky *et al.* 1997a; Haeussler *et al.* 2003; Pavlis *et al.* 2003; Roeske *et al.* 2003).

As a spreading ridge approaches a trench, progressively younger packages of offscraped sediments and volcanic rocks (Fig. 10) will be accreted to the overriding plate, and after a ridge is subducted, the accreted slabs will include progressively older packages of sediment and basalt along with the young sediments. Deformation becomes younger towards the trench and is superimposed on this complex pattern of ages of accreted sediments.

#### *Accretion of buoyant lithosphere (terrane accretion)*

If the lithosphere (oceanic or continental) is relatively thick (and buoyant) it may result in a temporary interruption to the subduction process through choking of the subduction zone, leading to the stepping out or flipping of the subduction zone (e.g. Ontong–Java Plateau; Peterson *et al.* 1999; Lister *et al.* 2001; Mann & Taira 2004). This flip will probably be associated with an interruption and/or migration of the magmatic arc (Fig. 11b). Terrane accretion was adopted by Coney *et al.* (1980) to explain the faulted juxtaposition of oceanic and convergent plate margin tectonostratigraphic units within the North American Cordillera. It is considered by many to constitute the main (sole) driving force for convergent margin orogenesis in that ‘eventually a downgoing plate will carry continental or island arc crust into a subduction zone’

(Moore & Twiss 1995, p. 212) to induce arc–arc or arc–continent collision, or terrane accretion (Dickinson 1977; Coney *et al.* 1980). Maxson & Tikoff (1996) argued that Cordilleran terrane accretion was the driving mechanism for the Laramide orogeny. Recent work in the Cordillera has emphasized that the number of terranes in the Cordillera is considerably less than originally envisaged by Coney and colleagues, and that many of the remaining terranes may not be suspect but are upper plate fragments that represent arcs and continental ribbons that lay outboard of, and along strike from, the Cordilleran margin (Monger & Knokleberg 1996; Johnston 2001; Colpron & Nelson 2006, 2009; Colpron *et al.* 2007). Seismic data across the northern Cordilleran orogen suggest that at least some of the accreted terranes are superficial with no deep crustal roots (Snyder *et al.* 2002, 2009) and may not be major impactors that drove orogenic events (Cawood & Buchan 2007); the terrane accretion model of orogenesis may therefore be ‘suspect’.

#### *Plate reorganization*

Tectonic plate reorganization resulting from a change in the position and angular motion of Euler poles, perhaps related to termination of plate boundaries through collision or an increased spreading rate, will lead to a global readjustment in plate interactions and has been invoked as a potential cause of accretionary orogenesis (Colblentz & Richardson 1996). Vaughan (1995; see also Vaughan & Livermore 2005) proposed that pan-Pacific margin tectonic and metamorphic effects were a response to major plate reorganization associated with an increased spreading rate in the Pacific during the mid-Cretaceous (Sutherland & Hollis 2001). Cawood & Buchan (2007) highlighted evidence for deformation, mountain building and resultant crustal growth in accretionary orogens during phases of supercontinent assembly (Boger & Miller 2004; Foden *et al.* 2006). They undertook a detailed analysis of the timing of collisional orogenesis associated with supercontinent assembly compared with that for accretionary orogenesis along the margins of a supercontinent. They showed that age relations for assembly of Gondwana and Pangaea indicate that the timing of collisional orogenesis within the interior of the supercontinents was synchronous with subduction initiation and contractional orogenesis within the marginal Terra Australis orogen, which extended along the palaeo-Pacific margin of the these supercontinents.

Final assembly of Gondwana occurred at the end of the Neoproterozoic to early Palaeozoic, between about 590 and 510 Ma. This was coeval with a switch along the Pacific margin of the supercontinent from

passive to convergent margin activity, followed by the Delamerian–Ross–Pampean orogenesis. Similarly, the final stages of assembly of the Pangaea supercontinent occurred during the end-Palaeozoic to early Mesozoic, between *c.* 320 and 250 Ma, and involved the accretion of Gondwana, Laurasia and Siberia. This phase of major plate boundary reorganization was accompanied by regional orogenesis along the Pacific margin of Gondwana–Pangaea (Gondwanide orogeny). The correspondence of this transitory coupling with, or immediately following, plate boundary reorganization, suggests that it may reflect plate kinematic readjustment involving increased relative convergence across the plate boundary. Cawood & Buchan (2007; see also Murphy & Nance 1991) suggested that this relationship probably reflects the global plate kinematic budget where termination of convergence during supercontinent assembly is compensated by subduction initiation and/or increased convergence along the exterior of the supercontinent. Transitory coupling across the plate boundary during subduction possibly accounts for the deformation and metamorphic pulses that develop in the accretionary orogens.

The analysis of Oncken *et al.* (2006*b*) suggests that Cenozoic orogenesis in the Andes is a response to global kinematic adjustment, in this case driven by opening of the Atlantic, resulting in an increase in westward drift of the South American plate relative to the Nazca plate (see Silver *et al.* 1998). Recently, Silver & Behn (2008) proposed that supercontinent collision may lead to a global loss of subduction. The data of Cawood & Buchan (2007), however, show that this concept is unlikely, at least in association with Gondwana and Pangaea assembly.

### Accretionary orogens and plate tectonics; when did plate tectonics begin?

Because accretionary orogens require convergent plate margins, their appearance in the geological record heralds the initiation of horizontal plate interactions on the Earth. The question of when plate tectonics began, what criteria can be used to recognize it in the rock record and, once established, whether it was continuous, episodic and/or alternated with some alternative process are much debated (Sleep 2000; Hamilton 2003; Stern 2005; O'Neill *et al.* 2007; Condie & Kröner 2008). The consensus of opinion, however, is that convergent plate interaction and the recycling and subduction of material from the Earth's surface into the mantle has been active since at least 3.2–3.0 Ga (Cawood *et al.* 2006; Dewey 2007; Condie & Kröner 2008; Windley & Garde 2009) and possibly

considerably earlier (Komiya *et al.* 1999; Harrison *et al.* 2005; Nemchin *et al.* 2008; Nutman *et al.* 2009; Polat *et al.* 2009). Well-constrained palaeomagnetic data demonstrate differential horizontal movements of continents in both Palaeoproterozoic and Archaean times, consistent with the lateral motion of lithospheric plates at divergent and convergent plate boundaries (Cawood *et al.* 2006). Well-preserved and unambiguous ophiolites associated with juvenile island-arc assemblages and modern-style accretion tectonics occur in the Palaeoproterozoic Trans-Hudson orogen of the Canadian shield (2.0 Ga Purtuniqu ophiolite, Scott *et al.* 1992), the Svecofennian orogen of the Baltic shield (1.95 Ga Jormua ophiolite, Peltonen & Kontinen 2004), and in the Mazatzal–Yavapai orogens of southeastern Laurentia (1.73 Ga Payson ophiolite, Dann 1997). Furnes *et al.* (2007) proposed that ophiolite-related sheeted dykes and pillow basalts occur in the 3.8 Ga Isua greenstone belt in SW Greenland, but this has been disputed by Nutman & Friend (2007). Late Archaean mafic–ultramafic complexes in the North China craton have also been interpreted as ophiolites (Kusky *et al.* 2001; Kusky 2004), but have also been disputed (Zhao *et al.* 2007). Paired high-*P*–low-*T* and high-*T*–low-*P* tectonothermal environments (Miyashiro 1961, 1972, 1973*b*), requiring plate subduction, have been recognized as far back as the Neoarchaean (Brown 2006, 2009).

Inferred arc-related assemblages (magmatic arc, intra-arc basins and back-arc basins), indicative of subduction and convergent plate interaction occur within greenstone sequences in many Archaean cratons including Yilgarn, Pilbara, Superior, North China, Slave, and southern Africa. The lithological association in these greenstones, including calc-alkaline volcanic rocks, and locally boninite, shoshonite and high-Mg andesite, along with the associated geochemical signatures, are almost identical to those found in rocks of modern convergent plate margin arcs (Condie & Harrison 1976; Hallberg *et al.* 1976; de Wit & Ashwal 1997; Bai & Dai 1998; Polat & Kerrich 1999, 2004; Cousens 2000; Percival & Helmstaedt 2004; Smithies *et al.* 2004, 2005; Kerrich & Polat 2006; Polat *et al.* 2009).

Styles of Archaean and Proterozoic mineralization resemble Phanerozoic deposits related to subduction environments (Sawkins 1990; Kerrich *et al.* 2005), including a Palaeoarchaean porphyry Cu deposit (Barley 1992) and Archaean and Palaeoproterozoic volcanogenic massive sulphide Cu–Zn deposits (Barley 1992; Allen *et al.* 1996; Syme *et al.* 1999; Wyman *et al.* 1999*a, b*).

Condie & Kröner (2008) listed several distinctive petrotectonic assemblages such as accretionary prisms as well as arc–back-arc–forearc associations that argue for the existence of

accretionary orogens since the early Archaean. For instance, the 3.2 Ga Fig Tree greywacke–shale sequence of the Barberton greenstone belt in South Africa has long been interpreted in terms of an accretionary prism (e.g. Lowe & Byerly 2007, and references therein), and there is geochronological, structural and geophysical evidence for terrane accretion in the late Archaean Abitibi greenstone belt, Superior Province, Canada through convergent plate interaction (Percival & Helmstaedt 2004, and references therein). The recognition of ocean plate stratigraphy in an orogen's rock record is a key indicator of both mid-ocean ridge spreading, required for its generation, and subduction accretion, necessary for its preservation. As such, it provides a key indicator for plate tectonics in the rock record. The proposal that an ocean plate stratigraphy is preserved in the Marble Bar greenstone belt in the Pilbara craton, supported by trace element geochemical data (Kato & Nakamura 2003), and in the Isua greenstone belt in Greenland (Komiya *et al.* 1999), suggests that ridge–trench movements and therefore plate tectonics were in operation in the Palaeoarchaeon.

Deep seismic reflection profiling across a number of late Archaean and Palaeoproterozoic belts has identified dipping reflectors, in some cases extending into the mantle, which underlie arc assemblages in the preserved accretionary orogen and are interpreted as a frozen subduction surface (Calvert *et al.* 1995; Cook *et al.* 1999; Cook & Erdmer 2005; Korja & Heikkinen 2005; Percival *et al.* 2006; Lahtinen *et al.* 2009).

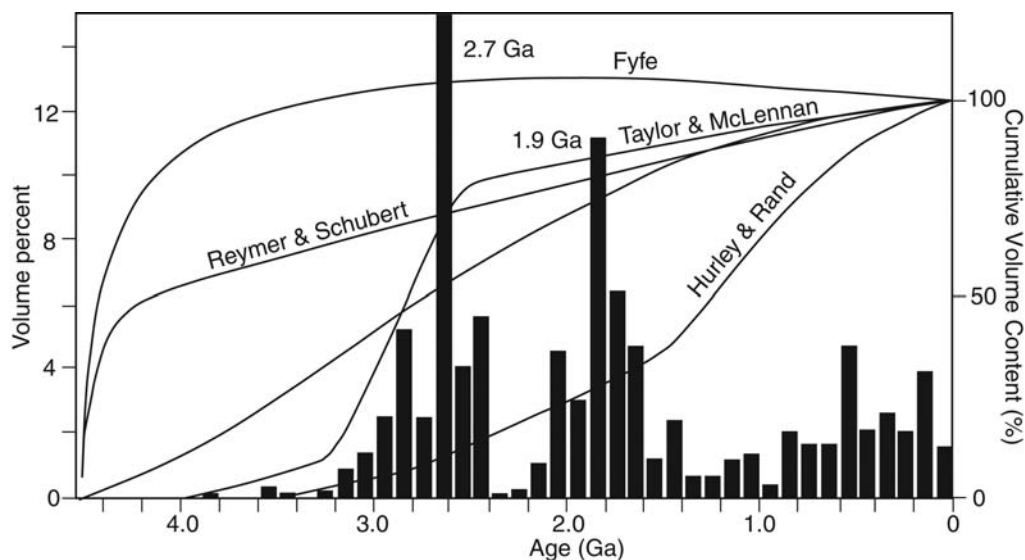
Nutman *et al.* (2009) and Polat *et al.* (2009) have presented data in support of convergent plate margin processes within the Eoarchaeon accretionary orogens of Isua, Greenland and Anshan, China (c. 3.8–3.6 Ga). They showed that the lithotectonic assemblages in these regions and their geochemistry are similar to those in Phanerozoic convergent plate margins involving the subduction of young, hot lithosphere. Harrison *et al.* (2005) inferred that subduction may extend back to the earliest phases of Earth evolution. They suggested that the isotopic systematics of Jack Hills zircons, northern Yilgarn, indicate formation in a continental environment characterized by calc-alkaline magmatism and crustal anatexis, features seen in the modern Earth in convergent margin settings and implying that subduction was established by 4.4 Ga ago.

### Accretionary orogens and continental growth

Continental growth involves the addition of mantle-derived (juvenile) material to the crust. Arc magmatism within accretionary orogens is invoked as the

major source of this material but with additional input derived from mantle plumes. Geochemical and isotopic data have shown that the composition of continental crust resembles subduction-related igneous rocks and suggest that there has been progressive growth of continental crust through time (Fig. 13; Taylor 1967; Taylor & McClellan 1985; McCulloch & Bennett 1994; Arculus 1999). Thus, accretionary orogens, with their subduction-related plate margins, are seen as the sites of net continental growth, rather than collisional orogens, which are envisaged as sites of crustal reworking (Dewey *et al.* 1986). Geochemical and isotopic studies from Neoproterozoic to Phanerozoic accretionary orogens in the Arabian–Nubian Shield, the Canadian Cordillera and the Central Asian Orogenic Belt indicate massive addition of juvenile crust during the period of 900–100 Ma (Samson *et al.* 1989; Kovalenko *et al.* 1996; Jahn *et al.* 2000a; Wu *et al.* 2000; Jahn 2004; Stern *in press*). However, recent whole-rock Nd and zircon Hf(–O) isotope data imply that continental crust formation was episodic, with significant pulses of juvenile magmatism and crustal growth in the Archaean and Palaeoproterozoic, and with no significant addition in the Phanerozoic (Fig. 13; Condie 1998, 2004; Hawkesworth & Kemp 2006; Kemp *et al.* 2006). Punctuated crustal growth may be related to mantle plume activity (Stein & Hofmann 1993; Condie 1998), and creates a paradox of global proportions, because plate tectonics can account for c. 90% of Earth's current heat loss with the remainder lost through plume activity (Davies 1999), and thus magmatic arcs should be the major site of continental growth. The isotopic age data outlined in Figure 13 are based on an analysis of the preserved rock record and the assumption that it is representative of the record of growth. In addition, improved microanalytical techniques are suggesting that the contribution of subduction processes to continental growth may have been masked. Hf–O isotopic analysis of zircons from the classic I-type granites of eastern Australia show that these rocks were formed by reworking of sedimentary materials through mantle-derived magmas rather than by melting of igneous rocks (Kemp *et al.* 2007) and thus are critical components of continental growth. Bulk rock isotopes will mask this component, and this suggests that the component of such material in continental growth may have been underestimated in the past.

The volume of continental crust that is added through time via juvenile magma addition appears to be effectively compensated by the return of continental and island arc crust to the mantle. Clift *et al.* (2009) and Scholl & von Huene (2009) have estimated that the long-term global average rate of arc magma additions is  $2.8\text{--}3.0\text{ km}^3\text{ a}^{-1}$ . Crustal



**Fig. 13.** Histogram of volume distribution of juvenile continental crust based on a compilation of U–Pb zircon ages integrated with Nd isotopic ages and lithological associations. Also plotted are models of continental growth, with 100% representing the present-day cumulative volume of crust (adapted from Condie 2005). Early models suggested slow initial growth followed by more rapid recent growth and were based on the geographical distribution of Rb–Sr and K–Ar isotope ages (Hurley & Rand 1969), which we now realize are probably reset by younger orogenic events. Some models suggested rapid early growth of continental crust, slowed by recycling of continental material and therefore resulting in a slower rate of growth or even a decrease in continental volume (Fyfe 1978; Reymer & Schubert 1984; Armstrong 1991). Other models have taken an intermediate approach to growth and require a more linear growth (unlabelled) or rapid growth during the late Archaean followed by steady-state growth driven by island arc magmatism (Taylor & McLennan 1985).

addition rates vary within arc systems over time, with the initial phase of arc construction (first 10 Ma) marked by rates that can be up to an order of magnitude larger than the long-term rate for an arc (Stern & Bloomer 1992; Stern 2004; Jicha *et al.* 2008).

Recycling of continental crust at convergent plate margins occurs by sediment subduction, subduction erosion and detachment of deeply underthrust crust (Scholl *et al.* 1980; Scholl & von Huene 2007, 2009; Clift *et al.* 2009). Sediment subduction entails the movement of lower plate sediment beneath the arc along the subduction channel (Fig. 9; Cloos & Shreve 1988*a, b*). Arc material may also be transported into the trench and then carried into the subduction channel. Material in the channel is carried beneath the frontal arc and if not underplated is carried into the mantle on the downgoing plate. Subduction erosion involves the transfer of material from the upper plate into the subduction channel and downward into the mantle. The loss of continental and arc crust through sediment subduction and subduction erosion has been estimated by Scholl & von Huene (2009) to be around  $2.5 \text{ km}^3 \text{ a}^{-1}$  of which some 60% is due to erosion. Scholl & von Huene (2009) noted that continent

and island arc crust is also carried into the mantle, where it can be detached, and is lost during final ocean closure and collision. They estimated that an additional  $0.7 \text{ km}^3 \text{ a}^{-1}$  is recycled into the mantle by this process. Thus, the total volume of crustal material moved into the mantle at subduction zones is around  $3.2 \text{ km}^3 \text{ a}^{-1}$ . This rate is sufficient that if plate tectonics has been operating since around 3.0 Ga (see Cawood *et al.* 2006) then a volume equal to the total current volume of continental crust would have been recycled into the mantle (Scholl & von Huene 2009).

Given uncertainties in these estimates for both the addition of crust and its removal from convergent plate margins, the net growth of continental crust is effectively zero, with crustal growth through magma addition effectively counterbalanced by removal of material. Thus, plate tectonics in general and convergent plate margins in particular, as represented by accretionary orogens, are not the sites of continental growth through time but rather sites of crustal reworking. Any single arc system can, however, show net addition or removal of material, hence allowing its preservation or removal from the rock record. For example, the South American margin has been undergoing long-term



crustal loss such that the trench has migrated landward with respect to the upper plate with time, resulting in the magmatic arc younging away from the trench and Jurassic arc magmas forming the most seaward land outcrops in the current forearc (Stern 1991; Franz *et al.* 2006; Glodny *et al.* 2006; Kukowski & Oncken 2006). Areas of rapid accretion of material, either through arc magmatism during the early stages of arc development or through the accretion of already assembled continental (e.g. arc fragments of the North American Cordillera) and thickened oceanic (e.g. Ontong–Java) crustal fragments, are more likely to survive the effects of crustal reworking and are more likely to be preserved in the geological record. This may therefore lead to selective preservation of periods of continental growth in the rock record as exemplified in Figure 13. In addition, the thickened crust of oceanic islands and plateaux, once incorporated into convergent plate margins (such as Wrangellia, Sorachi, Sanbagawa and some Archaean greenstones), are selectively preserved even during periods of subduction erosion.

This is a contribution to the International Lithosphere Program, Task Force 1 (ERAS) and is Publication 499 of the Mainz Geocycles Cluster. We appreciate discussions with our ERAS colleagues during field workshops in Taiwan and Japan. R. M. Clowes, G. S. Fuis, B. M. Jahn, E. C. Leitch, G. S. Lister, S. Maruyama and Y. X. Wang have generously shared their many insights with us. B. Murphy and P. Leat are thanked for their reviews of the manuscript. This paper is dedicated to Akiho Miyashiro (1919–2008), pioneer of petrology and tectonics, father of paired metamorphic belts in accretionary orogens, and strong advocate of an island arc setting for ophiolites.

## References

- ABOUCAMI, W., BOHER, M., MICHARD, A. & ALBARÈDE, F. 1990. A major 2.1 Ga old event of mafic magmatism in West Africa: An early stage of crustal accretion. *Journal of Geophysical Research*, **95**, 17605–17629.
- ALLEN, R. L., WEIHED, P. & SVENSON, S.-A. 1996. Setting of Zn–Cu–Au–Ag massive sulfide deposits in the evolution and facies architecture of a 1.9 Ga marine volcanic arc, Skellefte District, Sweden. *Economic Geology*, **91**, 1022–1053.
- ANSDELL, K. M. 2005. Tectonic evolution of the Manitoba–Saskatchewan segment of the Paleoproterozoic Trans-Hudson Orogen, Canada. *Canadian Journal of Earth Sciences*, **42**, 741–759.
- ARCULUS, R. J. 1999. Origins of the continental crust. *Journal and Proceedings of the Royal Society of New South Wales*, **132**, 83–110.
- ARMSTRONG, R. L. 1991. The persistent myth of crustal growth. *Australian Journal of Earth Sciences*, **38**, 613–630.
- AUBOUIN, J. 1965. *Geosynclines*. Elsevier, Amsterdam.
- BABEL WORKING GROUP. 1993a. Deep seismic reflection/refraction interpretation of crustal structure along BABEL profiles A and B in the southern Baltic Sea. *Geophysical Journal International*, **112**, 325–343.
- BABEL WORKING GROUP. 1993b. Integrated seismic studies of the Baltic Shield using data in the Gulf of Bothnia region. *Geophysical Journal International*, **112**, 305–324.
- BADARCH, G., CUNNINGHAM, W. D. & WINDLEY, B. F. 2002. A new terrane subdivision for Mongolia: Implications for the Phanerozoic crustal growth of Central Asia. *Journal of Asian Earth Sciences*, **21**, 87–110.
- BAI, J. & DAI, F. Y. 1998. Archean Crust. In: MA, X. Y. & BAI, J. (eds) *Precambrian Crustal Evolution of China*. Springer, Berlin, 15–86.
- BALLANCE, P. F., SCHOLL, D. W., VALLIER, T. L., STEVENSON, A. J., RYAN, H. & HERZER, R. H. 1989. Subduction of a Late Cretaceous seamount of the Louisville Ridge at the Tonga Trench: A model of normal and accelerated tectonic erosion. *Tectonics*, **8**, 953–962.
- BALLY, A. W. 1981. Thoughts on the tectonics of folded belts. In: PRICE, N. J. & MCCLAY, K. (eds) *Thrust and Nappe Tectonics*. Geological Society, London, Special Publications, **9**, 13–32.
- BANGS, N. L. & CANDE, S. C. 1997. The episodic development of a convergent margin inferred from structures and processes along the southern Chile margin. *Tectonics*, **16**, 489–505.
- BARLEY, M. E. 1992. A review of Archean volcanic-hosted massive sulphide and sulfate mineralization in Western Australia. *Economic Geology*, **87**, 855–872.
- BEAUMONT, C., ELLIS, S. & PFIFFNER, A. 1999. Dynamics of sediment subduction–accretion at convergent margins: Short-term modes, long-term deformation, and tectonic implications. *Journal of Geophysical Research*, **104**, 17573–17601.
- BELTRANDO, M., HERMANN, J., LISTER, G. & COMPAGNONI, R. 2007. On the evolution of orogens: Pressure cycles and deformation mode switches. *Earth and Planetary Science Letters*, **256**, 372–388.
- BIGNOLD, S. M. & TRELOAR, P. J. 2003. Northward subduction of the Indian plate beneath the Kohistan island arc, Pakistan Himalaya: New evidence from isotopic data. *Journal of the Geological Society, London*, **160**, 377–384.
- BOGER, S. D. & MILLER, J. M. 2004. Terminal suturing of Gondwana and the onset of the Ross–Delamerian Orogeny: The cause and effect of an Early Cambrian reconstruction of plate motions. *Earth and Planetary Science Letters*, **219**, 35–48.
- BRADLEY, D. C., KUSKY, T. M. *ET AL.* 2003. Geologic signature of early Tertiary ridge subduction in Alaska. In: SISSON, V. B., ROESKE, S. M. & PAVLIS, T. L. (eds) *Geology of a Transpressional Orogen Developed During Ridge–Trench Interaction along the North Pacific Margin*. Geological Society of America, Special Papers, **371**, 19–49.
- BROWN, M. 1998a. Ridge–trench interactions and high-*T*–low-*P* metamorphism, with particular reference to the Cretaceous evolution of the Japanese Islands. In: TRELOAR, P. J. & O'BRIEN, P. J. (eds)

- What Drives Metamorphism and Metamorphic Reactions?* Geological Society, London, Special Publications, **138**, 137–169.
- BROWN, M. 1998b. Unpairing metamorphic belts:  $P$ – $T$  paths and a tectonic model for the Ryoke Belt, southwest Japan. *Journal of Metamorphic Geology*, **16**, 3–22.
- BROWN, M. 2006. Duality of thermal regimes is the distinctive characteristic of plate tectonics since the Neoproterozoic. *Geology*, **34**, 961–964.
- BROWN, M. 2009. Metamorphic patterns in orogenic systems and the geological record. In: CAWOOD, P. A. & KRÖNER, A. (eds) *Earth Accretionary Systems in Space and Time*. Geological Society, London, Special Publications, **318**, 37–74.
- BURKE, K. C. A. 1977. Aulacogens and continental breakup. *Annual Review of Earth and Planetary Sciences*, **5**, 371–396.
- CALVERT, A. J., SAWYER, E. W., DAVIS, W. J. & LUDDEN, J. N. 1995. Archaean subduction inferred from seismic images of a mantle suture in the Superior Province. *Nature*, **375**, 670–674.
- CAWOOD, P. A. 1982. Structural relations in the subduction complex of the Paleozoic New England fold belt, eastern Australia. *Journal of Geology*, **90**, 381–392.
- CAWOOD, P. A. 1983. Modal composition and detrital clinopyroxene geochemistry of lithic sandstones from the New England fold belt (East Australia): A Paleozoic forearc terrane. *Geological Society of America Bulletin*, **94**, 1199–1214.
- CAWOOD, P. A. 1984. A geochemical study of metabasalts from a subduction complex in eastern Australia. *Chemical Geology*, **43**, 29–47.
- CAWOOD, P. A. 1990. Provenance mixing in an intraoceanic subduction zone: Tonga Trench–Louisville Ridge collision zone, Southwest Pacific. *Sedimentary Geology*, **67**, 35–53.
- CAWOOD, P. A. 1991a. Characterization of intra-oceanic magmatic arc source terranes by provenance studies of derived sediments. *New Zealand Journal of Geology and Geophysics*, **34**, 347–358.
- CAWOOD, P. A. 1991b. Nature and record of igneous activity in the Tonga Arc, SW Pacific, deduced from the phase chemistry of derived detrital grains. In: MORTON, A. C., TODD, S. P. & HAUGHTON, P. D. W. (eds) *Developments in Sedimentary Provenance Studies*. Geological Society, London, Special Publications, **57**, 305–321.
- CAWOOD, P. A. 2005. Terra Australis Orogen: Rodinia breakup and development of the Pacific and Iapetus margins of Gondwana during the Neoproterozoic and Paleozoic. *Earth-Science Reviews*, **69**, 249–279.
- CAWOOD, P. A. & BUCHAN, C. 2007. Linking accretionary orogenesis with supercontinent assembly. *Earth-Science Reviews*, **82**, 217–256.
- CAWOOD, P. A. & KORSCH, R. J. 2008. Assembling Australia: Proterozoic building of a continent. *Precambrian Research*, **166**, 1–35.
- CAWOOD, P. A. & NEMCHIN, A. A. 2001. Source regions for Laurentian margin sediments: Constraints from U/Pb dating of detrital zircon in the Newfoundland Appalachians. *Geological Society of America Bulletin*, **113**, 1234–1246.
- CAWOOD, P. A. & SUHR, G. 1992. Generation and obduction of ophiolites; constraints for the Bay of Islands Complex, western Newfoundland. *Tectonics*, **11**, 884–897.
- CAWOOD, P. A. & TYLER, I. M. 2004. Assembling and reactivating the Proterozoic Capricorn Orogen: Lithotectonic elements, orogenies, and significance. *Precambrian Research*, **128**, 201–218.
- CAWOOD, P. A., NEMCHIN, A. A., LEVERENZ, A., SAEED, A. & BALLANCE, P. F. 1999. U/Pb dating of detrital zircons: Implications for the provenance record of Gondwana margin terranes. *Geological Society of America Bulletin*, **111**, 1107–1119.
- CAWOOD, P. A., NEMCHIN, A. A., STRACHAN, R. A., KINNY, P. D. & LOEWY, S. 2004. Laurentian provenance and an intracratonic tectonic setting for the Moine Supergroup, Scotland, constrained by detrital zircons from the Loch Eil and Glen Urquhart successions. *Journal of the Geological Society, London*, **161**, 861–874.
- CAWOOD, P. A., KRÖNER, A. & PISAREVSKY, S. 2006. Precambrian plate tectonics: Criteria and evidence. *GSA Today*, **16**, 4–11.
- CAWOOD, P. A., NEMCHIN, A. A., STRACHAN, R. A., PRAVE, A. R. & KRABBENDAM, M. 2007. Sedimentary basin and detrital zircon record along East Laurentia and Baltica during assembly and breakup of Rodinia. *Journal of the Geological Society, London*, **164**, 257–275.
- CLAESON, D. T. & MEURER, W. P. 2004. Fractional crystallization of hydrous basaltic ‘arc-type’ magmas and the formation of amphibole-bearing gabbroic cumulates. *Contributions to Mineralogy and Petrology*, **147**, 288–304.
- CLIFT, P., SCHOUTEN, H. & VANNUCCI, P. 2009. Arc–continent collisions, sediment recycling and the maintenance of the continental crust. In: CAWOOD, P. A. & KRÖNER, A. (eds) *Earth Accretionary Systems in Space and Time*. Geological Society, London, Special Publications, **318**, 75–103.
- CLOOS, M. & SHREVE, R. L. 1988a. Subduction-channel model of prism accretion, mélange formation, sediment subduction, and subduction erosion at convergent plate margins: 1. Background and description. *Pure and Applied Geophysics*, **128**, 456–500.
- CLOOS, M. & SHREVE, R. L. 1988b. Subduction-channel model of prism accretion, mélange formation, sediment subduction, and subduction erosion at convergent plate margins: 2. Implications and discussion. *Pure and Applied Geophysics*, **128**, 501–545.
- CLOWES, R. M., BRANDON, M. T., GREEN, A. G., YORATH, C. J., SUTHERLAND BROWN, A., KANASEWICH, E. R. & SPENCER, C. 1987. LITHOPROBE—southern Vancouver Island: Cenozoic subduction complex imaged by deep seismic reflections. *Canadian Journal of Earth Sciences*, **24**, 31–51.
- CLOWES, R. M., ZELT, C. A., AMOR, J. R. & ELLIS, R. M. 1995. Lithospheric structure in the southern Canadian Cordillera from a network of seismic refraction lines. *Canadian Journal of Earth Sciences*, **32**, 1485–1513.
- CLOWES, R. M., BAIRD, D. J. & DEHLER, S. A. 1997. Crustal structure of the Cascadian subduction zone, southwestern British Columbia, from potential field

- and seismic studies. *Canadian Journal of Earth Sciences*, **34**, 317–335.
- COLBLENTZ, D. D. & RICHARDSON, R. M. 1996. Analysis of the South American intraplate stress field. *Journal of Geophysical Research*, **101**, 8643–8657.
- COLLINS, W. J. 2002a. Hot orogens, tectonic switching, and creation of continental crust. *Geology*, **30**, 535–538.
- COLLINS, W. J. 2002b. Nature of extensional accretionary orogens. *Tectonics*, **21**, 6–1–6–12, doi: 10.1029/2000TC001272.
- COLLINS, W. J. & TEYSSIER, C. 1989. Crustal scale ductile fault systems in the Arunta Inlier, central Australia. *Tectonophysics*, **158**, 49–66.
- COLPRON, M. & NELSON, J. L. (eds) 2006. *Paleozoic Evolution and Metallogeny of Pericratonic Terranes at the Ancient Pacific Margin of North America, Canadian and Alaskan Cordillera*. Geological Association of Canada, Special Paper, **45**.
- COLPRON, M. & NELSON, J. L. 2009. A Palaeozoic Northwest Passage: incursion of Caledonian, Baltican and Siberian terranes into eastern Panthalassa, and the early evolution of the North American Cordillera. In: CAWOOD, P. A. & KRÖNER, A. (eds) *Earth Accretionary Systems in Space and Time*. Geological Society, London, Special Publications, **318**, 273–307.
- COLPRON, M., NELSON, J. L. & MURPHY, D. C. 2007. Northern Cordilleran terranes and their interactions through time. *GSA Today*, **17**, 4–10.
- CONDIE, K. C. 1998. Episodic continental growth and supercontinents: A mantle avalanche connection? *Earth and Planetary Science Letters*, **163**, 97–108.
- CONDIE, K. C. 2004. Supercontinents and superplume events: Distinguishing signals in the geologic record. *Physics of the Earth and Planetary Interiors*, **146**, 319–332.
- CONDIE, K. C. 2005. *Earth as an Evolving Planetary System*. Elsevier, Amsterdam.
- CONDIE, K. C. & HARRISON, N. M. 1976. Geochemistry of the Archean Bulawayan Group, Midlands greenstone belt, Rhodesia. *Precambrian Research*, **3**, 253–271.
- CONDIE, K. C. & KRÖNER, A. 2008. When did plate tectonics begin? Evidence from the geologic record. In: CONDIE, K. C. & PEASE, V. (eds) *When did Plate Tectonics Begin?* Geological Society, America, Memoirs, **440**, 281–295.
- CONEY, P. J. 1973. Non-collision tectogenesis in western North America. In: TARLING, D. H. & RUNCORN, S. H. (eds) *Implications of Continental Drift to the Earth Sciences*. Academic Press, New York, 713–727.
- CONEY, P. J. 1992. The Lachlan Fold Belt of eastern Australia and Circum-Pacific tectonic evolution. *Tectonophysics*, **214**, 1–25.
- CONEY, P. J., JONES, D. L. & MONGER, J. W. H. 1980. Cordilleran suspect terranes. *Nature*, **288**, 329–333.
- CONEY, P. J., EDWARDS, A., HINE, R., MORRISON, F. & WINDRIM, D. 1990. The regional tectonics of the Tasman orogenic system, eastern Australia. *Journal of Structural Geology*, **12**, 519–543.
- COOK, F. A. & ERDMER, P. 2005. An 1800 km cross section of the lithosphere through the northwestern North American plate: Lessons from 4.0 billion years of Earth History. *Canadian Journal of Earth Sciences*, **42**, 1295–1311.
- COOK, F. A., VAN DER VELDEN, A. J., HALL, K. W. & ROBERTS, B. J. 1999. Frozen subductions in Canada's Northwest Territories: Lithoprobe deep lithospheric reflection profiling of the western Canadian Shield. *Tectonics*, **18**, 1–24.
- COOMBS, D. S., LANDIS, C. A., NORRIS, R. J., SINTON, J. M., BURNS, D. J. & CRAW, D. 1976. The Dun Mountain Ophiolite Belt, New Zealand, its tectonic setting, constitution and origin, with special reference to the southern portion. *American Journal of Science*, **276**, 561–603.
- COUSENS, B. L. 2000. Geochemistry of the Archean Kam Group, Yellowknife greenstone belt, Slave province, Canada. *Journal of Geology*, **108**, 181–197.
- COWAN, D. S. & PAGE, B. M. 1975. Recycled Franciscan material in Franciscan mélange, west of Paso Robles, California. *Geological Society of America Bulletin*, **85**, 1623–1634.
- CROOK, K. A. W. 1974. Kratonisation of west Pacific-type geosynclines. *Journal of Geology*, **87**, 24–36.
- CURRIE, C. A. & HYNDMAN, R. D. 2006. The thermal structure of subduction zone back arcs. *Journal of Geophysical Research*, **111**, B08404, doi:10.1029/2005JB004024.
- CURRIE, C. A., HUISMANS, R. S. & BEAUMONT, C. 2008. Thinning of continental backarc lithosphere by flow-induced gravitational instability. *Earth and Planetary Science Letters*, **269**, 436–447.
- DALZIEL, I. W. D. 1991. Pacific margins of Laurentia and east Antarctica–Australia as a conjugate rift pair: Evidence and implications for an Eocambrian supercontinent. *Geology*, **19**, 598–601.
- DALZIEL, I. W. D., LAWVER, L. A. & MURPHY, J. B. 2000. Plumes, orogenesis, and supercontinental fragmentation. *Earth and Planetary Science Letters*, **178**, 1–11.
- DANN, J. C. 1997. Pseudostratigraphy and origin of the Early Proterozoic Payson ophiolite, central Arizona. *Geological Society of America Bulletin*, **109**, 347–365.
- DAVIES, G. F. 1999. *Dynamic Earth Plates, Plumes and Mantle Convection*. Cambridge University Press, Cambridge.
- DE FRANCO, R., GOVERS, R. & WORTEL, R. 2008. Nature of the plate contact and subduction zones diversity. *Earth and Planetary Science Letters*, **271**, 245–253.
- DEWEY, J. F. 1969. Evolution of the Appalachian–Caledonian orogen. *Nature*, **222**, 124–129.
- DEWEY, J. F. 1980. Episodicity, sequence and style at convergent plate boundaries. In: STRANGEWAY, D. W. (ed.) *The Continental Crust and Its Mineral Deposits*. Geological Association of Canada, Special Papers, **20**, 553–576.
- DEWEY, J. F. 2007. The secular evolution of plate tectonics and the continental crust: An outline. In: HATCHER, R. D. JR., CARLSON, M. P., MCBRIDE, J. H. & CATALÁN, J. M. (eds) *4-D Framework of Continental Crust*. Geological Society of America, Memoirs, **200**, 1–8.
- DEWEY, J. F. & SPALL, H. 1975. Pre-Mesozoic plate tectonics. *Geology*, **3**, 422–424.
- DEWEY, J. F., HEMPTON, M. R., KIDD, W. S. F., SAROGLU, F. & SENGOR, A. M. C. 1986. Shortening of continental lithosphere: The neotectonics of Eastern

- Anatolia—a young collision zone. In: COWARD, M. P. & RIES, A. C. (eds) *Collision Tectonics*. Geological Society, London, Special Publications, **19**, 3–36.
- DE WIT, M. J. & ASHWAL, L. D. 1997. *Greenstone Belts*. Oxford University Press, Oxford.
- DICKINSON, W. R. 1977. Tectono-stratigraphic evolution of subduction-controlled sedimentary assemblages. In: TALWANI, M. & PITMAN, W. C., III (eds) *Island Arcs, Deep-Sea Trenches and Back-Arc Basins*. Maurice Ewing Series 1, American Geophysical Union, 33–40.
- DICKINSON, W. R. 1985. Interpreting provenance relations from detrital modes of sandstones. In: ZUFFA, G. G. (ed.) *Provenance of Arenites*. NATO-ASI Series, **148**, 333–361.
- DICKINSON, W. R. 1995. Forearc basins. In: BUSBY, C. J. & INGERSOLL, R. V. (eds) *Tectonics of Sedimentary Basins*. Blackwell Science, Cambridge, MA, 221–261.
- DICKINSON, W. R. & SNYDER, W. S. 1978. Geometry of subducted slabs related to the San Andreas transform. *Journal of Geology*, **87**, 609–627.
- DICKINSON, W. R. & SUCZEK, C. A. 1979. Plate tectonics and sandstone compositions. *AAPG Bulletin*, **63**, 2164–2182.
- DICKINSON, W. R. & VALLONI, R. 1980. Plate settings and provenance of sands in modern ocean basins. *Geology*, **8**, 82–86.
- DIRKS, P., HAND, M., COLLINS, W. J. & OFFLER, R. 1992. Structural metamorphic evolution of the Tia Complex, New England Fold Belt—thermal overprint of an accretion subduction complex in a compressional back-arc setting. *Journal of Structural Geology*, **14**, 669–688.
- DIRKS, P. H. G. M., OFFLER, R. & COLLINS, W. J. 1993. Timing of emplacement and deformation of the Tia Granodiorite, southern New England Fold Belt, NSW: Implications for the metamorphic history. *Australian Journal of Earth Sciences*, **40**, 103–108.
- ELSASSER, W. M. 1971. Sea-floor spreading as thermal convection. *Journal of Geophysical Research*, **76**, 1101–1112.
- ERNST, W. G. 2005. Alpine and Pacific styles of Phanerozoic mountain building: Subduction-zone petrogenesis of continental crust. *Terra Nova*, **17**, 165–188.
- FERGUSON, C. L. 1984. The Gundahl Complex of the New England Fold Belt, eastern Australia: A tectonic mélange formed in the Paleozoic subduction complex. *Journal of Structural Geology*, **6**, 257–271.
- FERGUSON, C. L. 1985. Trench floor sedimentary sequences in a Palaeozoic subduction complex, eastern Australia. *Sedimentary Geology*, **42**, 181–200.
- FERGUSON, C. L. & CONEY, P. J. 1992. Convergence and intraplate deformation in the Lachlan Fold Belt of southeastern Australia. *Tectonophysics*, **214**, 417–439.
- FODEN, J. D., ELBURG, M. A., DOUGHERTY-PAGE, J. & BURT, A. 2006. The timing and duration of the Delamerian Orogeny: Correlation with the Ross Orogen and implications for Gondwana assembly. *Journal of Geology*, **114**, 189–210.
- FOSTER, D. A. & GRAY, D. R. 2000. The structure and evolution of the Lachlan Fold Belt (Orogen) of eastern Australia. *Annual Review of Earth and Planetary Sciences*, **28**, 47–80, doi:10.1146/annurev.earth.28.1.47.
- FOSTER, D. A. & GRAY, D. R. 2007. Strain rate in Paleozoic thrust sheets, the western Lachlan Orogen, Australia: Strain analysis and fabric geochronology. In: SEARS, J. W., HARMS, T. A. & EVENCHICH, C. A. (eds) *Whence the Mountains? Inquiries into the Evolution of Orogenic Systems: A Volume in Honor of Raymond A. Price*. Geological Society of America, Boulder, CO, 349–368, doi:10.1130/2007.2433(17).
- FOSTER, D. A., GRAY, D. R., SPAGGIARI, C., KAMENOV, G. & BIERLEIN, F. P. 2009. Palaeozoic Lachlan orogen, Australia: accretion and construction of continental crust in a marginal ocean setting: Isotopic evidence from Cambrian metavolcanic rocks. In: CAWOOD, P. A. & KRÖNER, A. (eds) *Earth Accretionary Systems in Space and Time*. Geological Society, London, Special Publications, **318**, 329–349.
- FRANZ, G., KRAMER, F. W. ET AL. 2006. Crustal evolution at the central Andean continental margin: A geochemical record of crustal growth, recycling and destruction. In: ONCKEN, O., CHONG, G. ET AL. (eds) *The Andes: Active Subduction Orogeny*. Frontiers in Earth Sciences, **1**, 45–64.
- FUIS, G. S. 1998. West margin of North America—a synthesis of recent seismic transects. *Tectonophysics*, **288**, 265–292.
- FUIS, G. S. & CLOWES, R. M. 1993. Comparison of deep structure along three transects of the western North American continental margin. *Tectonics*, **12**, 1420–1435.
- FUIS, G. S. & MOONEY, W. D. 1990. Lithosphere structure and tectonics from seismic refraction and other data. In: WALLACE, R. E. (ed.) *The San Andreas Fault System*. US Geological Survey, Professional Papers, **1515**, 206–236.
- FUIS, G. S. & PLAFKER, G. 1991. Evolution of deep structure along the Trans-Alaska Crustal Transect, Chugach Mountains and Copper River basin, southern Alaska. *Journal of Geophysical Research*, **96**, 4229–4253.
- FUIS, G. S., MURPHY, J. M., LUTTER, W. J., MOORE, T. E., BIRD, K. J. & CHRISTENSEN, N. I. 1997. Deep seismic structure and tectonics of northern Alaska: Crustal-scale duplexing with deformation extending into the upper mantle. *Journal of Geophysical Research*, **102**, 20873–20896, doi:10.1029/96JB03959.
- FUIS, G. S., MOORE, T. E. ET AL. 2008. Trans-Alaska Crustal Transect and continental evolution involving subduction underplating and synchronous foreland thrusting. *Geology*, **36**, 267–270, doi:10.1130/G24257A.1.
- FURNES, H., DE WIT, M., STAUDIGEL, H., ROSING, M. & MUEHLENBACHS, K. 2007. A vestige of Earth's oldest ophiolite. *Science*, **315**, 1704–1707.
- FYFE, W. S. 1978. The evolution of the Earth's crust: Modern plate tectonics or ancient hot spot tectonics? *Chemical Geology*, **23**, 89–114.
- GARDE, A. A., CHADWICK, B., GROCOTT, J., HAMILTON, M. A., MCCAFFREY, K. J. W. & SWAGER, C. P. 2002. Mid-crustal detachment during oblique convergence: Implications of partitioned transpression in the magmatic arc and proximal forearc of the Palaeoproterozoic Ketilidian orogen, southern Greenland. *Journal of the Geological Society, London*, **159**, 247–261.



- GLODNY, J., ECHTLER, H. *ET AL.* 2006. Long-term geological evolution and mass-flow balance of the South–Central Andes. In: ONCKEN, O., CHONG, G. *ET AL.* (eds) *The Andes: Active Subduction Orogeny*. Frontiers in Earth Science, **1**, 401–428.
- GOWER, C. F. 1996. The evolution of the Grenville Province in eastern Labrador, Canada. In: BREWER, T. S. (ed.) *Precambrian Crustal Evolution in the North Atlantic Region*. Geological Society, London, Special Publications, **112**, 197–218.
- GOWER, C. F., RIVERS, T. & RYAN, A. B. 1990. Mid-Proterozoic Laurentia–Baltica: An overview of its geological evolution and a summary of the contributions made by this volume. In: GOWER, C. F., RIVERS, T. & RYAN, A. B. (eds) *Mid-Proterozoic Laurentia–Baltica*. Geological Association of Canada, Special Papers, **38**, 1–22.
- GRAY, D. R. & FOSTER, D. A. 2006. Crust restoration for the western Lachlan Orogen using the strain-reversal, area-balancing technique: Implications for crustal components and original thicknesses. *Australian Journal of Earth Sciences*, **53**, 329–341.
- GREENLY, E. 1919. *The Geology of Anglesey*. Memoir of the Geological Survey of Great Britain.
- GROVES, D. I. & BIERLEIN, F. P. 2007. Geodynamic settings of mineral deposit systems. *Journal of the Geological Society, London*, **164**, 19–30.
- GUTSCHER, M.-A. 2002. Andean subduction styles and their effect on thermal structure and interplate coupling. *Journal of South American Earth Sciences*, **15**, 3–10.
- GUTSCHER, M.-A., SPAKMAN, W., BIJWAARD, H. & ENGDAHL, E. 2000. Geodynamics of flat subduction: Seismicity and tomographic constraints from the Andean margin. *Tectonics*, **19**, 814–833.
- HAEUSSLER, P., BRADLEY, D. C. & GOLDFARB, R. 2003. Brittle deformation along the Gulf of Alaska margin in response to Palaeocene–Eocene triple junction migration. In: SISSON, V. B., ROESKE, S. M. & PAVLIS, T. L. (eds) *Geology of a Transpressional Orogen Developed during Ridge–Trench Interaction along the North Pacific Margin*. Geological Society of America, Special Papers, **371**, 119–140.
- HALL, R. 2002. Cenozoic geological and plate tectonic evolution of SE Asia and the SW Pacific: Computer-based reconstructions, model and animations. *Journal of Asian Earth Sciences*, **20**, 353–431.
- HALL, R. 2009. The Eurasian SE Asian margin as a modern example of an accretionary orogen. In: CAWOOD, P. A. & KRÖNER, A. (eds) *Earth Accretionary Systems in Space and Time*. Geological Society, London, Special Publications, **318**, 351–372.
- HALLBERG, J. A., CARTER, D. N. & WEST, K. N. 1976. Archaean volcanism and sedimentation near Mee-katharra, Western Australia. *Precambrian Research*, **3**, 577–595.
- HAMILTON, W. 1979. *Tectonics of the Indonesian Region*. US Geological Survey, Professional Papers, **1078**.
- HAMILTON, W. B. 2003. An alternative Earth. *GSA Today*, **13**, 4–12.
- HAND, M. & SANDIFORD, M. 1999. Intraplate deformation in central Australia, the link between subsidence and fault reactivation. *Tectonophysics*, **305**, 121–140.
- HARRISON, T. M., BLICHERT-TOFT, J., MÜLLER, W., ALBARÈDE, F., HOLDEN, P. & MOJZSIS, S. J. 2005. Heterogeneous Hadean hafnium: Evidence of continental crust at 4.4 to 4.5 Ga. *Science*, **310**, 1947–1950.
- HAWKESWORTH, C. J. & KEMP, A. I. S. 2006. Evolution of continental crust. *Nature*, **443**, 811–817.
- HAWKINS, J. W. 1994. Petrologic synthesis: Lau Basin transect (Leg 135). In: HAWKINS, J., PARSON, L. & ALLAN, J. (eds) *Proceedings of the Ocean Drilling Program, Scientific Results*, 135. Ocean Drilling Program, College Station, TX, 879–905.
- HOFFMAN, P. F. 1973. Evolution of an early Proterozoic continental margin: The Coronation Geosyncline and associated aulacogens of the NW Canadian Shield. *Philosophical Transactions of the Royal Society of London, Series A*, **273**, 547–581.
- HOFFMAN, P. F. 1991. Did the breakout of Laurentia turn Gondwanaland inside-out? *Science*, **252**, 1409–1412.
- HOFFMAN, P. F., BURKE, K. C. A. & DEWEY, J. F. 1974. Aulacogens and their genetic relation to geosynclines, with a Proterozoic example from the Great Slave Lake, Canada. In: DOTT, R. H. & SHAVER, R. H. (eds) *Modern and Ancient Geosynclinal Sedimentation*. Society of Economic Paleontologists and Mineralogists, Special Publications, **19**, 38–55.
- HOLM, D. K., VAN SCHMUS, W. R., MACNEILL, L. C., BOERBOOM, T. J., SCHWEITZER, D. & SCHNEIDER, D. 2005. U–Pb zircon geochronology of Paleoproterozoic plutons from the northern midcontinent, USA: Evidence for subduction flip and continued convergence after geon 18 Penokean orogenesis. *Geological Society of America Bulletin*, **117**, 259–275.
- HSÜ, K. J. 1971. Franciscan mélanges as a model for eugeosynclinal sedimentation and underthrusting tectonics. *Journal of Geophysical Research*, **76**, 1162–1170.
- HURLEY, P. M. & RAND, J. R. 1969. Predrift continental nuclei. *Science*, **164**, 1229–1242.
- HUSSON, L., CONRAD, C. P. & FACCENNA, C. 2008. Tethyan closure, Andean orogeny, and westward drift of the Pacific Basin. *Earth and Planetary Science Letters*, **271**, 303–310.
- HYNDMAN, R. D., YORATH, C. J., CLOWES, R. M. & DAVIS, E. E. 1990. The northern Cascadia subduction zone at Vancouver Island: Seismic structure and tectonic history. *Canadian Journal of Earth Sciences*, **27**, 313–329.
- HYNDMAN, R. D., WANG, K. & YAMANO, M. 1995. Thermal constraints on the seismogenic portion of the southwestern Japan subduction thrust. *Journal of Geophysical Research*, **100**, 15373–15392.
- HYNDMAN, R. D., CURRIE, C. A. & MAZZOTTI, S. P. 2005. Subduction zone backarcs, mobile belts and orogenic heat. *GSA Today*, **15**, 4–10.
- IAFFALDANO, G. & BUNGE, H.-P. 2008. Strong plate coupling along the Nazca–South American convergent margin. *Geology*, **36**, 443–446.
- IAFFALDANO, G., BUNGE, H.-P. & DIXON, T. H. 2006. Feedback between mountain belt growth and plate convergence. *Geology*, **34**, 893–896.
- INGERSOLL, R. V., GRAHAM, S. A. & DICKINSON, W. R. 1995. Remnant-ocean basins. In: BUSBY, C. J. &

- INGERSOLL, R. V. (eds) *Tectonics of Sedimentary Basins*. Blackwell Science, Cambridge, MA, 363–391.
- ISOZAKI, Y. 1996. Anatomy and genesis of a subduction-related orogen: A new view of geotectonic subdivision and evolution of the Japanese Islands. *Island Arc*, **5**, 289–320.
- ISOZAKI, Y. 1997. Jurassic accretion tectonics of Japan. *Island Arc*, **6**, 25–51.
- ISOZAKI, Y. & BLAKE, M. C. 1994. Biostratigraphic constraints on formation and timing of accretion in a subduction complex. An example from the Franciscan complex in northern California. *Journal of Geology*, **102**, 283–296.
- ISOZAKI, Y., MARUYAMA, S. & FURUOKA, F. 1990. Accreted oceanic materials in Japan. *Tectonophysics*, **181**, 179–205.
- JAHN, B. M. 2004. The Central Asian Orogenic Belt and growth of the continental crust in the Phanerozoic. In: MALPAS, J., FLETCHER, C. J. N., ALI, J. R. & AITCHESON, J. C. (eds) *Aspects of the Tectonic Evolution of China*. Geological Society, London, Special Publications, **226**, 73–100.
- JAHN, B. M., WU, F. Y. & CHEN, B. 2000a. Granitoids of the Central Asian orogenic belt and continental growth in the Phanerozoic. *Transactions of the Royal Society of Edinburgh, Earth Sciences*, **91**, 181–193.
- JAHN, B. M., WU, F. Y. & CHEN, B. 2000b. Massive granitoid generation in Central Asia: Nd isotope evidence and implication for continental growth in the Phanerozoic. *Episodes*, **23**, 82–92.
- JAMIESON, R. A., BEAUMONT, C., FULLSACK, P. & LEE, B. 1998. Barrovian regional metamorphism: Where's the heat? In: TRELOAR, P. J. & O'BRIEN, P. J. (eds) *What Drives Metamorphism and Metamorphic Reactions?* Geological Society, London, Special Publications, **138**, 23–51.
- JENNER, G. A., CAWOOD, P. A., RAUTENSCHLEIN, M. & WHITE, W. M. 1987. Composition of back-arc basin volcanics, Valu Fa Ridge, Lau Basin; evidence for a slab-derived component in their mantle source. *Journal of Volcanology and Geothermal Research*, **32**, 209–222.
- JICHA, B. R., SCHOLL, D. W., SINGER, B. S., YOGODZINSKI, G. M. & KAY, S. M. 2008. Revised age of Aleutian Island Arc formation implies high rate of magma production. *Geology*, **34**, 661–664, doi: 10.1130/G22433.1.
- JOHNSON, P. R. & WOLDEHAIMANOT, B. 2003. Development of the Arabian–Nubian Shield: Perspectives on accretion and deformation in the northern East African orogen and the assembly of Gondwana. In: YOSHIDA, M., WINDLEY, B. F. & DASGUPTA, S. (eds) *Proterozoic East Gondwana: Supercontinent Assembly and Breakup*. Geological Society, London, Special Publications, **206**, 289–325.
- JOHNSTON, S. T. 2001. The Great Alaskan Terrane Wreck: Reconciliation of paleomagnetic and geological data in the northern Cordillera. *Earth and Planetary Science Letters*, **193**, 259–272.
- JORDAN, T. E. 1995. Retroarc foreland and related basins. In: BUSBY, C. J. & INGERSOLL, R. V. (eds) *Tectonics of Sedimentary Basins*. Blackwell Science, Cambridge, MA, 331–362.
- KARLSTROM, K. E., AHALL, K.-I., HARLAN, S. S., WILLIAMS, M. L., MCLELLAND, J. & GEISSMAN, J. W. 2001. Long-lived (1.8–1.0 Ga) convergent orogen in southern Laurentia, its extensions to Australia and Baltica, and implications for refining Rodinia. *Precambrian Research*, **111**, 5–30.
- KATO, Y. & NAKAMURA, K. 2003. Origin and global tectonic significance of Early Archaean cherts from the Marble Bar greenstone belt, Pilbara craton, Western Australia. *Precambrian Research*, **125**, 191–293.
- KATO, Y., OHTA, I., TSUNEMATSU, T., WATANABE, Y., ISOZAKI, Y., MARUYAMA, S. & IMAI, N. 1998. Rare earth element variations in mid-Archaean banded iron formations: Implications for the chemistry of ocean and continent and plate tectonics. *Geochimica et Cosmochimica Acta*, **62**, 3475–3497.
- KATO, Y., NAKAO, K. & ISOZAKI, Y. 2002. Geochemistry of late Permian to early Triassic pelagic cherts from southwest Japan: Implications for an oceanic redox change. *Chemical Geology*, **182**, 15–34.
- KAWAI, T., WINDLEY, B. F., TERABAYASHI, M., YAMAMOTO, H., MARUYAMA, S. & ISOZAKI, Y. 2006. Mineral isograds and metamorphic zones of the Anglesey blueschist belt, UK: Implications for the metamorphic development of a Neoproterozoic subduction–accretion complex. *Journal of Metamorphic Geology*, **24**, 591–602.
- KAWAI, T., WINDLEY, B. F. ET AL. 2007. Geotectonic framework of the Blueschist Unit on Anglesey–Llwyn, UK, and its role in the development of a Neoproterozoic accretionary orogen. *Precambrian Research*, **153**, 11–28.
- KAY, M. 1951. *North American Geosynclines*. Geological Society of America, Memoirs, **48**.
- KAY, S. M. & MPODOZIS, C. 2001. Central Andean ore deposits linked to evolving shallow subduction systems and thickening crust. *GSA Today*, **11**, 4–9.
- KAY, S. M. & MPODOZIS, C. 2002. Magmatism as a probe to the Neogene shallowing of the Nazca plate beneath the modern Chilean flat-slab. *Journal of South American Earth Sciences*, **15**, 39–57.
- KEMP, A. I. S., HAWKESWORTH, C. J., PATERSON, B. A. & KINNY, P. D. 2006. Episodic growth of the Gondwana supercontinent from hafnium and oxygen isotopes in zircon. *Nature*, **439**, 580–583.
- KEMP, A. I. S., HAWKESWORTH, C. J. ET AL. 2007. Magmatic and crustal differentiation history of granitic rocks from Hf–O isotopes in zircon. *Science*, **315**, 980–983.
- KERRICH, R. & POLAT, A. 2006. Archean greenstone–tonalite duality: Thermochemical mantle convection models or plate tectonics in the early Earth global dynamics? *Tectonophysics*, **415**, 141–165.
- KERRICH, R., GOLDFARB, R. & RICHARDS, J. P. 2005. Metallogenic provinces in an evolving geodynamic framework. *Economic Geology*, **100**, 1097–1136.
- KIMURA, G., SAKAKIBARA, M. & OKAMURA, M. 1994. Plumes in central Panthalassa? Deductions from accreted oceanic fragments in Japan. *Tectonics*, **13**, 905–916.
- KIMURA, K. & HORI, R. 1993. Offscraping accretion of Jurassic chert–clastic complexes in the Mino–Tamba belt, central Japan. *Journal of Structural Geology*, **15**, 145–161.

- KODAIRA, S., TAKAHASHI, N., PARK, J.-O., MOCHBAKI, K., SHINOHANA, M. & KIMMA, S. 2000. Western Nankai Trough seismogenic: Results from a wide-angle ocean bottom seismic survey. *Journal of Geophysical Research*, **105**, 5882–5906, doi:10.1029/1999JB900394.
- KOMIYA, T., MARIYAMA, S., MASUDA, T., NOBDA, S., HAYASHI, M. & OKAMOTO, K. 1999. Plate tectonics at 3.8–3.7 Ga: Field evidence from the Isua Accretionary Complex, southern West Greenland. *Journal of Geology*, **107**, 515–554.
- KORJA, A. & HEIKKINEN, P. 2005. The accretionary Svecofennian orogen—insight from the BABEL profiles. *Precambrian Research*, **136**, 241–268.
- KORJA, A., KORJA, T., LUOSTO, U. & HEIKKINEN, P. 1993. Seismic and geoelectric evidence for collisional and extensional events in the Fennoscandian Shield—implications for Precambrian crustal evolution. *Tectonophysics*, **219**, 129–152.
- KOVALENKO, V. I., YARMOLYUK, V. V., KOVACH, V. P., KOTOV, A. B., KOZAKOV, I. K. & SALNIKOVA, E. B. 1996. Sources of Phanerozoic granitoids in Central Asia: Sm–Nd isotope data. *Geochemical International*, **34**, 628–640.
- KRÖNER, A., BRANDL, G., NEMCHIN, A. A. & PIDGEON, R. T. 1999. Single zircon ages for granitoid gneisses in the Central Zone of the Limpopo Belt, Southern Africa and geodynamic significance. *Precambrian Research*, **93**, 299–337.
- KRÖNER, A. & WINDLEY, B. F. *ET AL.* 2007. Accretionary growth and crust-formation in the central Asian Orogenic Belt and comparison with the Arabian–Nubian shield. In: HATCHER, R. D., JR. CARLSON, M. P., MCBRIDE, J. H. & CATALAN, J. M. (eds) *The 4-D framework of the continental crust—Integrating crustal processes through time*. Geological Society of America, Memoirs, **200**, 181–210.
- KRÖNER, A., HEGNER, E., LEHMANN, B., HEINHORST, J., WINGATE, M. T. D., LIU, D. Y. & ERMELOV, P. 2008. Palaeozoic arc magmatism in the Central Asian Orogenic Belt of Kazakhstan: SHRIMP zircon ages and whole-rock Nd isotopic systematics. *Journal of Asian Earth Sciences*, **32**, 118–130.
- KUKOWSKI, N. & ONCKEN, O. 2006. Subduction erosion—the ‘normal’ mode of fore-arc, material transfer along the Chile margin? In: ONCKEN, O., CHONG, G. *ET AL.* (eds) *The Andes: Active Subduction Orogeny*. Frontiers in Earth Science, **1**, 217–236.
- KUSKY, T. & YOUNG, C. 1999. Emplacement of the Resurrection Peninsula ophiolite in the southern Alaska forearc during a ridge–trench encounter. *Journal of Geophysical Research*, **104**, 29025–29054.
- KUSKY, T. M. 1991. Structural development of an Archean orogen, western Point Lake, Northwest Territories. *Tectonics*, **10**, 820–841.
- KUSKY, T. M. 2004. *Precambrian Ophiolites and Related Rocks*. Developments in Precambrian Geology, **13**.
- KUSKY, T. M. & BRADLEY, D. C. 1999. Kinematics of mélange fabrics: Examples and applications from the McHugh Complex, Kenai Peninsula, Alaska. *Journal of Structural Geology*, **21**, 1773–1796.
- KUSKY, T. M. & KIDD, W. S. F. 1992. Remnants of an Archean oceanic plateau, Belingwa greenstone belt, Zimbabwe. *Geology*, **20**, 43–46.
- KUSKY, T. M. & POLAT, A. 1999. Growth of granite–greenstone terranes at convergent margins, and stabilization of Archean cratons. *Tectonophysics*, **305**, 43–73.
- KUSKY, T. M., BRADLEY, D. C. & HAEUSSLER, P. 1997a. Progressive deformation of the Chugach accretionary complex, Alaska, during a Palaeogene ridge–trench encounter. *Journal of Structural Geology*, **19**, 139–157.
- KUSKY, T. M., BRADLEY, D. C., HAEUSSLER, P. & KARL, S. 1997b. Controls on accretion of flysch and mélange belts at convergent margins: Evidence from Chugach Bay thrust and Iceworm Mélange, Chugach Terrane, Alaska. *Tectonics*, **16**, 855–878.
- KUSKY, T. M., LI, J. G. & TUCKER, R. T. 2001. The Archean Dongwanzi ophiolite complex, North China Craton: 2.505 billion year old oceanic crust and mantle. *Science*, **292**, 1142–1145.
- KUSKY, T. M., BRADLEY, D., DONLEY, D. T., ROWLEY, D. & HAEUSSLER, P. J. 2003. Controls on intrusion of near-trench magmas of the Sanak–Barabof belt, Alaska, during Palaeogene ridge subduction, and consequences for forearc evolution. In: SISSON, V. B., ROESKE, S. M. & PAVLIS, T. L. (eds) *Geology of a Transpressional Orogen Developed During a Ridge–Trench Interaction along the North Pacific Margin*. Geological Society of America, Special Papers, **371**, 269–292.
- KUSKY, T. M., GLASS, A. & BRADLEY, D. C. 2007a. Structure, Cr-chemistry, and age of the Border Ranges ultramafic/mafic complex: A suprasubduction zone ophiolite complex. In: RIDGWAY, K. D., TROP, J. M., GLEN, J. M. G. & O’NEILL, J. M. (eds) *Tectonic Growth of a Collisional Continental Margin: Crustal Evolution of Southern Alaska*. Geological Society of America, Special Papers, **431**, 207–225.
- KUSKY, T. M., WINDLEY, B. F. & ZHAI, M. G. 2007b. Tectonic evolution of the North China Block: From orogen to craton to orogen. In: ZHAI, M. G., WINDLEY, B. F., KUSKY, T. M. & MENG, Q. R. (eds) *Lithospheric Thinning under Eastern Asia*. Geological Society, London, Special Publications, **280**, 1–34.
- LAHTINEN, R., KORJA, A. & NIRONEN, M. 2005. Palaeoproterozoic tectonic evolution of the Fennoscandian Shield. In: LEHTINEN, M., NURMI, P. & RÄMÖ, T. (eds) *The Precambrian Bedrock of Finland—Key to the evolution of the Fennoscandian Shield*. Elsevier, Amsterdam, 418–532.
- LAHTINEN, R., KORJA, A., NIRONEN, M. & HEIKKINEN, P. 2009. Palaeoproterozoic accretionary processes in Fennoscandia. In: CAWOOD, P. A. & KRÖNER, A. (eds) *Earth Accretionary Systems in Space and Time*. Geological Society, London, Special Publications, **318**, 237–256.
- LALLEMAND, S., HEURET, A. & BOUTELIER, D. 2005. On the relationships between slab dip, back-arc stress, upper plate absolute motion, and crustal nature in subduction zones. *Geochemistry, Geophysics, Geosystems*, **6**, article number Q09006.
- LALLEMAND, S., HEURET, A., FACCENNA, C. & FUNICIELLO, F. 2008. Subduction dynamics as revealed by trench migration. *Tectonics*, **27**, doi:10.1029/2007/TC002212.

- LEE, C.-T.-A., MORTON, D. M., KISTLER, R. W. & BAIRD, A. K. 2007. Petrology and tectonics of Phanerozoic continent formation: From island arcs to accretion and continental arc magmatism. *Earth and Planetary Science Letters*, **263**, 370–387.
- LEITCH, E. C. 1984. Marginal basins of the SW Pacific and the preservation and recognition of their ancient analogues: A review. In: KOKELAAR, B. P. & HOWELLS, M. F. (eds) *Marginal Basin Geology*. Geological Society, London, Special Publications, **16**, 97–108.
- LI, Z. X. & LI, X. H. 2007. Formation of a 1300-km-wide intracontinental orogen and post-orogenic magmatic province in Mesozoic South China: A flat-slab subduction model. *Geology*, **35**, 179–182.
- LISTER, G. S. & FORSTER, M. A. 2006. The plate-tectonic significance of inversion cycles during orogenesis. *Geological Society of America, Abstracts with Programs*, Speciality Meeting No. 2, 119.
- LISTER, G. S., FORSTER, M. A. & RAWLINGS, T. J. 2001. Episodicity during orogenesis. In: MILLER, J. A., HOLDSWORTH, R. E., BUICK, I. S. & HAND, M. (eds) *Continental Reactivation and Reworking*. Geological Society, London, Special Publications, **184**, 89–113.
- LOWE, D. R. & BYERLY, G. R. 2007. An overview of the geology of the Barberton greenstone belt and vicinity: Implications for early crustal development. In: VAN KRANENDONK, M. J., SMITHIES, R. H. & BENNETT, B. (eds) *Earth's Oldest Rocks*. Elsevier, Amsterdam, 481–526.
- LUCAS, S. B., SYME, E. C. & ASHTON, K. E. 1999. New perspectives on the Flin Flon Belt, Trans-Hudson orogen, Manitoba and Saskatchewan: An introduction to the special issue on the NATMAP Shield Margin Project, Part 1. *Canadian Journal of Earth Sciences*, **36**, 135–140.
- LUO, Z. 1991. The dynamical model for lithospheric evolution in the Longmenshan orogenic belt. *Journal of Chengdu College Geology*, **18**, 1–7.
- MACKENZIE, J. M., CANIL, D., JOHNSTON, S. T., ENGLISH, J., MIHALYNUK, M. G. & GRANT, B. 2005. First evidence for ultrahigh-pressure garnet peridotite in the North American Cordillera. *Geology*, **33**, 105–108.
- MAEDA, J. & KAGAMI, H. 1996. Interaction of a spreading ridge an accretionary prism: Implications from MORB magmatism in the Hidaka magmatic zone, Hokkaido, Japan. *Geology*, **24**, 31–34.
- MANN, P. & TAIRA, A. 2004. Global tectonic significance of the Solomon Islands and Ontong Java Plateau convergent zone. *Tectonophysics*, **389**, 137–190.
- MARSAGLIA, K. M. 1995. Interarc and backarc basins. In: BUSBY, C. J. & INGERSOLL, R. V. (eds) *Tectonics of Sedimentary Basins*. Blackwell Science, Cambridge, MA, 299–329.
- MARUYAMA, S. 1997. Pacific-type orogeny revisited: Miyashiro-type orogeny proposed. *Island Arc*, **6**, 91–120.
- MARUYAMA, S., KAWAI, T. & WINDLEY, B. F. in press. Ocean plate stratigraphy and its imbrication in an accretionary orogen: The Mona complex, Anglesey–Lleyn, Wales, UK. In: KUSKY, T. M., ZHAI, M. G. & XIAO, W. J. (eds) *The Evolved Continents: Understanding the Processes of Continental Growth*. Geological Society, London, Special Publications.
- MATSUDA, T. & ISOZAKI, Y. 1991. Well-documented travel history of Mesozoic pelagic chert in Japan: From remote ocean to subduction zone. *Tectonics*, **10**, 475–499.
- MATSUDA, T. & UYEDA, S. 1971. On the Pacific-type orogeny and its model: Extension of the paired belts concept and possible origin of marginal seas. *Tectonophysics*, **11**, 5–27.
- MAXSON, J. & TIKOFF, B. 1996. Hit-and-run collisional model for the Laramide orogeny, western United States. *Geology*, **24**, 968–972.
- MCCULLOCH, M. T. & BENNETT, V. C. 1994. Progressive growth of the Earth's continental crust and depleted mantle: Geochemical constraints. *Geochimica et Cosmochimica Acta*, **58**, 4717–4738.
- METCALFE, I. 1996a. Gondwanaland dispersion, Asian accretion and evolution of eastern Tethys. *Australian Journal of Earth Sciences*, **43**, 605–623.
- METCALFE, I. 1996b. Pre-Cretaceous evolution of SE Asian Terranes. In: HALL, R. & BLUNDELL, D. J. (eds) *Tectonic Evolution of SE Asia*. Geological Society, London, Special Publications, **106**, 97–122.
- METCALFE, I. 2002. Permian tectonic framework and palaeogeography of SE Asia. *Journal of Asian Earth Sciences*, **20**, 551–566.
- MIYASHIRO, A. 1961. Evolution of metamorphic belts. *Journal of Petrology*, **2**, 277–311.
- MIYASHIRO, A. 1972. Metamorphism and related magmatism in plate tectonics. *American Journal of Science*, **272**, 629–656.
- MIYASHIRO, A. 1973a. *Metamorphism and Metamorphic Belts*. Halstead Press, New York.
- MIYASHIRO, A. 1973b. Paired and unpaired metamorphic belts. *Tectonophysics*, **17**, 241–254.
- MIYASHIRO, A., AKI, K. & ŞENGÖR, A. M. C. 1982. *Orogeny*. Wiley, Chichester.
- MONGER, J. & KNOCKLEBERG, W. H. 1996. Evolution of the northern North America Cordillera: Generation, fragmentation, displacement and accretion of successive North American plate margin arcs. In: COYNER, A. R. & FAHAY, P. L. (eds) *Geology and Ore Deposits of the American Cordillera*. Geological Society of Nevada, 1133–1152.
- MOORES, E. M. 1991. Southwest U.S.–East Antarctica (SWEAT) connection: A hypothesis. *Geology*, **19**, 425–428.
- MOORES, E. M. & TWISS, R. J. 1995. *Tectonics*. W. H. Freeman, New York.
- MORLEY, C. K. 2009. Evolution from an oblique subduction back-arc mobile belt to a highly oblique collisional margin: the Cenozoic tectonic development of Thailand and eastern Myanmar. In: CAWOOD, P. A. & KRÖNER, A. (eds) *Earth Accretionary Systems in Space and Time*. Geological Society, London, Special Publications, **318**, 373–403.
- MORTIMER, N. 2004. New Zealand's geological foundations. *Gondwana Research*, **7**, 261–272.
- MÜNTENER, O., KELEMEN, P. B. & GROVE, T. L. 2001. The role of H<sub>2</sub>O during crystallization of primitive arc magmas under uppermost mantle conditions and genesis of igneous pyroxenites: An experimental study. *Contributions to Mineralogy and Petrology*, **141**, 643–658.



- MURPHY, J. B. & NANCE, R. D. 1991. Supercontinent model for the contrasting character of Late Proterozoic orogenic belts. *Geology*, **19**, 469–472.
- MURPHY, J. B., OPPLIGER, G. L. & BRIMHALL, G. H. 1998. Plume-modified orogeny: An example from the western United States. *Geology*, **26**, 731–734.
- MURPHY, J. B., VAN STAAL, C. R. & KEPPIE, J. D. 1999. Middle to late Palaeozoic Acadian orogeny in the northern Appalachians: A Laramide-style plume-modified orogeny? *Geology*, **27**, 653–656.
- MURPHY, J. B., HYNES, A. J., JOHNSTON, S. T. & KEPPIE, J. D. 2003. Reconstructing the ancestral Yellowstone plume from accreted seamounts and its relationship to flat-slab subduction. *Tectonophysics*, **365**, 185–194.
- NAKANISHI, A., TAKAHASHI, N. *ET AL.* 2002. Crustal structure across the coseismic rupture zone of the 1944 Tonankai earthquake, the central Nankai Trough seismogenic zone. *Journal of Geophysical Research*, **107**, EMP 2-1-21, doi:10.1029/2001JB000424.
- NEMCHIN, A. A., WHITEHOUSE, M. J., MENNEKEN, M., GEISLER, T., PIDGEON, R. T. & WILDE, S. A. 2008. A light carbon reservoir recorded in zircon-hosted diamond from the Jack Hills. *Nature*, **454**, 92–95.
- NIE, S., YIN, A., ROWLEY, D. B. & JIN, Y. 1994. Exhumation of the Dabie Shan ultra-high pressure rocks and accumulation of the Songpan–Ganzi flysch sequence, central China. *Geology*, **22**, 999–1002.
- NUTMAN, A. P. & FRIEND, C. R. L. 2007. Comment on 'A Vestige of Earth's Oldest Ophiolite'. *Science*, **318**, 746c, doi:10.1126/science.1144148.
- NUTMAN, A. P., BENNET, V. C., FRIEND, C. R. L., JENNER, F., WAN, Y. & LIU, D.-Y. 2009. Eoarchaean crustal growth in West Greenland (Itsaq Gneiss Complex) and in northeastern China (Anshan area): review and synthesis. In: CAWOOD, P. A. & KRÖNER, A. (eds) *Earth Accretionary Systems in Space and Time*. Geological Society, London, Special Publications, **318**, 127–154.
- OLDOW, J. S., BALLY, A. W. & AVÉ LALLEMANT, H. G. 1990. Transpression, orogenic float, and lithospheric balance. *Geology*, **18**, 991–994.
- ONCKEN, O., CHONG, G. *ET AL.* 2006a. *The Andes: Active Subduction Orogeny*. Springer, Berlin.
- ONCKEN, O., HINDLE, D., KLEY, J., ELGER, K. & SCHEMMANN, K. 2006b. Deformation of the Central Andean upper plate system—facts, fiction, and constraints for plateau models. In: ONCKEN, O., CHONG, G. *ET AL.* (eds) *The Andes: Active Subduction Orogeny*. Springer, Berlin, 3–27.
- O'NEILL, C., LENARDIC, A., MORESI, L., TORSVIK, T. H. & LEE, C.-T. A. 2007. Episodic Precambrian subduction. *Earth and Planetary Science Letters*, **262**, 552–562.
- OSOZAWA, S. 1988. Ridge subduction-induced orogeny, a case study of the Cretaceous to Palaeogene in southwest Japan. In: FLOWER, M. F. J., CHUNG, S.-L., LO, C.-H. & LEE, T.-Y. (eds) *Mantle Dynamics and Plate Interactions in East Asia*. American Geophysical Union, Geodynamic Series, **27**, 331–336.
- OXBURGH, E. R. & TURCOTTE, D. L. 1970. Thermal structure of island arcs. *Geological Society of America Bulletin*, **81**, 1665–1688.
- OXBURGH, E. R. & TURCOTTE, D. L. 1971. Origin of paired metamorphic belts and crustal dilation in island arc regions. *Journal of Geophysical Research*, **76**, 1315–1327.
- PACKHAM, G. H. & LEITCH, E. C. 1974. The role of plate tectonic theory in the interpretation of the Tasman Orogenic Zone. In: DENMEAD, A. K., TWEEDALE, G. W. & WILSON, A. F. (eds) *The Tasman Geosyncline—A Symposium*. Geological Society of Australia, Brisbane, 129–154.
- PAGE, R. A. & BROCHER, T. M. 1993. Thrusting of the central California margin over the edge of the Pacific plate during the transform regime. *Geology*, **21**, 635–638.
- PARRA, M., FAUGERES, J.-C., GROUSSET, F. & PUJOL, C. 1997. Sr–Nd isotopes as tracers of fine-grained detrital sediments: The South-Barbados accretionary prism during the last 150 kyr. *Marine Geology*, **136**, 225–243.
- PAVLIS, T. L., MARTY, K. & SISSON, V. B. 2003. Constrictional flow within the Eocene forearc of southern Alaska: An effect of dextral shear during ridge subduction. In: SISSON, V. B., ROESKE, S. M. & PAVLIS, T. L. (eds) *Geology of a Transpressional Orogen Developed during Ridge–Trench Interaction along the North Pacific Margin*. Geological Society of America, Special Papers, **371**, 171–190.
- PELTONEN, P. & KONTINEN, A. 2004. The Jormua ophiolite: A mafic–ultramafic complex from an ancient ocean–continent transition zone. In: KUSKY, T. M. (ed.) *Precambrian Ophiolites and Related Rocks*. Elsevier, Amsterdam, 35–71.
- PERCIVAL, J. A. & HELMSTAEDT, H. 2004. Insights on Archean continent–ocean assembly, western Superior Province, from new structural, geochemical and geochronological observations: Introduction and summary. *Precambrian Research*, **132**, 209–212.
- PERCIVAL, J. A., SANBORN-BARRIE, M., SKULSKI, T., STOTT, G. M., HELMSTAEDT, H. & WHITE, D. J. 2006. Tectonic evolution of the western Superior Province from NATMAP and Lithoprobe studies. *Canadian Journal of Earth Sciences*, **43**, 1085–1117.
- PETFORD, N. & ATHERTON, M. P. 1995. Cretaceous–Tertiary volcanics and syn-subduction crustal extension in northern central Peru. In: SMELLIE, J. L. (ed.) *Volcanism Associated with Extension at Consuming Plate Margins*. Geological Society, London, Special Publications, **81**, 233–248.
- PETTERSON, M. G., BABBS, T. *ET AL.* 1999. Geological–tectonic framework of Solomon Islands, SW Pacific: Crustal accretion and growth within an intra-oceanic setting. *Tectonophysics*, **301**, 35–60.
- POLAT, A. & KERRICH, R. 1999. Formation of an Archean tectonic melange in the Schreiber–Hemlo greenstone belt, Superior Province, Canada: Implications for Archean subduction–accretion processes. *Tectonics*, **18**, 733–755.
- POLAT, A. & KERRICH, R. 2004. Precambrian arc associations: Boninites, adakites, magnesian andesites, and Nb-enriched basalts. In: KUSKY, T. M. (ed.) *Precambrian Ophiolites and Related Rocks*. Elsevier, Amsterdam, 567–597.
- POLAT, A., KERRICH, R. & WINDLEY, B. 2009. Archean crustal growth processes in southern West Greenland

- and the southern Superior Province: geodynamic and magmatic constraints. In: CAWOOD, P. A. & KRÖNER, A. (eds) *Earth Accretionary Systems in Space and Time*. Geological Society, London, Special Publications, **318**, 155–191.
- RAMOS, V. A., CRISTALLINI, E. O. & PEREZ, D. J. 2002. The Pampean flat-slab of the Central Andes. *Journal of South American Earth Sciences*, **15**, 59–78.
- RATSCHBACHER, L., FRISCH, W., CHEN, C. & PAN, G. 1996. Cenozoic deformation, rotation, and stress patterns in eastern Tibet and western Sichuan, China. In: YIN, A. & HARRISON, T. M. (eds) *The Tectonic Evolution of Asia*. Cambridge University Press, Cambridge, 227–249.
- REYMER, A. & SCHUBERT, G. 1984. Phanerozoic addition rates to the continental crust and crustal growth. *Tectonics*, **3**, 63–77.
- ROESKE, S. M., SNEE, L. W. & PAVLIS, T. L. 2003. Dextral-slip reactivation of an arc–forearc boundary during Late Cretaceous–Early Eocene oblique convergence in the northern Cordillera. In: SISSON, V. B., ROESKE, S. M. & PAVLIS, T. L. (eds) *Geology of a Transpressional Orogen Developed during Ridge–Trench Interaction along the North Pacific Margin*. Geological Society of America, Special Papers, **371**, 141–169.
- ROUSSE, S., GILDER, S., FARBER, D., McNULTY, B., PATRIAT, P., TORRES, V. & SEMPERE, T. 2003. Palaeomagnetic tracking of mountain building in the Peruvian Andes since 10 Ma. *Tectonics*, **22**, 1048–1069.
- ROYDEN, L. H. 1993a. Evolution of retreating subduction boundaries formed during continental collision. *Tectonics*, **12**, 629–638.
- ROYDEN, L. H. 1993b. The tectonic expression of slab pull at continental convergent boundaries. *Tectonics*, **12**, 303–325.
- RUSSO, R. M. & SILVER, P. G. 1996a. Cordillera formation, mantle dynamics, and the Wilson cycle. *Geology*, **24**, 511–514.
- RUSSO, R. M. & SILVER, P. G. 1996b. Trench-parallel flow beneath the Nazca Plate from seismic anisotropy. *Science*, **263**, 1105–1111.
- SAGIYA, T. & THATCHER, W. 1999. Coseismic slip resolution along a plate boundary megathrust: The Nankai Trough, Southwest Japan. *Journal of Geophysical Research*, **104**, 1111–1130.
- SALEEBY, J. 2003. Segmentation of the Laramide Slab—evidence from the southern Sierra Nevada region. *Geological Society of America Bulletin*, **115**, 655–668.
- SAMSON, S. D. & PATCHETT, P. J. 1991. The Canadian cordillera as a modern analogue of Proterozoic crustal growth. *Australian Journal of Earth Sciences*, **38**, 595–611.
- SAMSON, S. D., MCCLELLAND, W. C., PATCHETT, P. J., GEHRELS, G. E. & ANDERSON, R. G. 1989. Evidence from neodymium isotopes for mantle contributions to Phanerozoic crustal genesis in the Canadian Cordillera. *Nature*, **337**, 705–709.
- SANDIFORD, M. & HAND, M. 1998. Controls on the locus of intraplate deformation in central Australia. *Earth and Planetary Science Letters*, **162**, 97–110.
- SANDIFORD, M., HAND, M. & MCLAREN, S. 2001. Tectonic feedback, intraplate orogeny and the geochemical structure of the crust: A central Australian perspective. In: MILLER, J. A., HOLDSWORTH, R. E., BUICK, I. S. & HAND, M. (eds) *Continental Reactivation and Reworking*. Geological Society, London, Special Publications, **184**, 195–218.
- SAWAKI, Y., SHIBUYA, T. ET AL. in press. Imbricated ocean plate stratigraphy and U–Pb zircon ages from tuff beds in cherts in the Ballantrae Complex, SW Scotland. *Geological Society of America Bulletin*.
- SAWKINS, F. J. 1990. *Metal Deposits in Relation to Plate Tectonics*. Springer, Berlin.
- SCHELLART, W. P. 2008. Overriding plate shortening and extension above subduction zones: A parametric study to explain formation of the Andes Mountains. *Geological Society of America Bulletin*, **120**, 1441–1454.
- SCHELLART, W. P. & LISTER, G. S. 2004. Tectonic models for the formation of arc-shaped convergent zones and backarc basins. In: SUSSMAN, A. J. & WEIL, A. B. (eds) *Orogenic Curvature: Integrating Palaeomagnetic and Structural Analyses*. Geological Society of America, Special Papers, **383**, 237–258.
- SCHELLART, W. P., LISTER, G. S. & TOY, V. G. 2006. A Late Cretaceous and Cenozoic reconstruction of the Southwest Pacific region: Tectonics controlled by subduction and slab rollback processes. *Earth-Science Reviews*, **76**, 191–233.
- SCHELLART, W. P., FREEMAN, J., STEGMAN, D. R., MORESI, L. & MAY, D. 2007. Evolution and diversity of subduction zones controlled by slab width. *Nature*, **446**, 308–311.
- SCHOLL, D. W. & VON HUENE, R. 2007. Exploring the implications for continental basement tectonics if estimated rates of crustal removal (recycling) at Cenozoic subduction zones are applied to Phanerozoic and Precambrian convergent ocean margins. In: HATCHER, R. D. JR, CARLSON, M. P., MCBRIDE, J. H. & CATALÁN, J. M. (eds) *4-D Framework of Continental Crust*. Geological Society of America, Memoirs, 9–32.
- SCHOLL, D. W. & VON HUENE, R. 2009. Implications of estimated magmatic additions and recycling losses at the subduction zones of accretionary (non-collisional) and collisional (suturing) orogens. In: CAWOOD, P. A. & KRÖNER, A. (eds) *Earth Accretionary Systems in Space and Time*. Geological Society, London, Special Publications, **318**, 105–125.
- SCHOLL, D. W., VON HUENE, R., VALLIER, T. L. & HOWELL, D. G. 1980. Sedimentary masses and concepts about tectonic processes at underthrust ocean margins. *Geology*, **8**, 564–568.
- SCOTT, D. J., HELMSTAADT, H. & BICKLE, M. J. 1992. Purtuniqu ophiolite, Cape Smith belt, northern Quebec, Canada: A reconstructed section of Early Proterozoic oceanic crust. *Geology*, **20**, 173–176.
- SEDLÖCK, R. L. & ISOZAKI, Y. 1990. Lithology and biostratigraphy of Franciscan-like chert and associated rocks in west-central Baja California, Mexico. *Geological Society of America Bulletin*, **102**, 852–864.
- SEELEY, D. R., VAIL, P. R. & WALTON, G. G. 1974. Trench slope model. In: BURK, C. A. & DRAKE, C. L. (eds) *The Geology of Continental Margins*. Springer, Berlin, 249–260.

- ŞENGÖR, A. M. C. 1976. Collision of irregular continental margins: Implications for foreland deformation of Alpine-type orogens. *Geology*, **4**, 779–782.
- ŞENGÖR, A. M. C. 1993. Turkic-type orogeny in the Altai: Implications for the evolution of continental crust and methodology of regional tectonic analysis (34th Bennett Lecture). *Transactions of the Leicester Literature and Philosophical Society*, **87**, 37–54.
- ŞENGÖR, A. M. C. 1995. Sedimentation and tectonics of fossil rifts. In: BUSBY, C. J. & INGERSOLL, R. V. (eds) *Tectonics of Sedimentary Basins*. Blackwell, Cambridge, MA, 53–117.
- ŞENGÖR, A. M. C. & NATAL'IN, B. A. 1996. Paleotectonics of Asia: Fragments of a synthesis. In: YIN, A. & HARRISON, T. M. (eds) *The Tectonic Evolution of Asia*. Cambridge University Press, Cambridge, 486–640.
- ŞENGÖR, A. M. C., BURKE, K. & DEWEY, J. F. 1978. Rifts and high angles to orogenic belts: Tests for their origin and the upper Rhine graben as an example. *American Journal of Science*, **278**, 24–40.
- SHREVE, R. L. & CLOOS, M. 1986. Dynamics of sediment subduction, mélange formation, and prism accretion. *Journal of Geophysical Research*, **91**, 10229–10245.
- SILVER, P. G. & BEHN, M. D. 2008. Intermittent Plate Tectonics? *Science*, **319**, 85–88.
- SILVER, P. G., RUSSO, R. M. & LITHGOW-BERTELLONI, C. 1998. Coupling of South American and African plate motion and plate deformation. *Science*, **279**, 60–63.
- SISSON, V. B., ROESKE, S. & PAVLIS, T. L. (eds) 2003. *Geology of a Transpressional Orogen Developed During Ridge–Trench Interaction along the North Pacific Margin*. Geological Society of America, Special Papers, **371**.
- SLEEP, N. H. 2000. Evolution of the mode of convection within terrestrial planets. *Journal of Geophysical Research*, **105**, 17563–17578.
- SMELLIE, J. L. (ed.) 1994. *Volcanism Associated with Extension at Consuming Plate Margins*. Geological Society, London, Special Publications, **84**.
- SMITH, G. A. & LANDIS, C. A. 1995. Intra-arc basins. In: BUSBY, C. J. & INGERSOLL, R. V. (eds) *Tectonics of Sedimentary Basins*. Blackwell Science, Cambridge, MA, 263–298.
- SMITHIES, R. H., CHAMPION, D. C. & SUN, S.-S. 2004. The case for Archean boninites. *Contributions to Mineralogy and Petrology*, **147**, 705–721.
- SMITHIES, R. H., CHAMPION, D. C. & VAN KRANENDONK, M. J. 2005. Modern-style subduction processes in the Mesoproterozoic: Geochemical evidence from the 3.12 Ga Whundo intra-oceanic arc. *Earth and Planetary Science Letters*, **231**, 221–237.
- SNYDER, D. B., LUCAS, S. B. & MCBRIDE, J. H. 1996a. Crustal and mantle reflectors from Palaeoproterozoic orogens and their relation to arc–continent collisions. In: BREWER, T. S. (ed.) *Precambrian Crustal Evolution in the North Atlantic Region*. Geological Society, London, Special Publications, **112**, 1–23.
- SNYDER, D. B., PRASETYO, H., BLUNDELL, D. J., PIGRAM, C. J., BARBER, A. J., RICHARDSON, A. & TJOKOSAPROETRO, S. 1996b. A dual doubly vergent orogen in the Banda Arc continent–continent collision zone as observed on deep seismic reflection profiles. *Tectonics*, **15**, 34–53.
- SNYDER, D. B., CLOWES, R. M., COOK, F. A., ERDMER, P., EVENCHICH, C. A., VAN DER VELDEN, A. J. & HALL, K. W. 2002. Proterozoic prism arrests suspect terranes: Insights into the ancient Cordilleran margin from seismic reflection data. *GSA Today*, **12**, 4–9.
- SNYDER, D. B., PILKINGTON, M., CLOWES, R. M. & COOK, F. A. 2009. The underestimated Proterozoic component of the Canadian Cordillera accretionary margin. In: CAWOOD, P. A. & KRÖNER, A. (eds) *Earth Accretionary Systems in Space and Time*. Geological Society, London, Special Publications, **318**, 257–271.
- SOH, W., NAKAYAMA, K. & KIMURA, T. 1998. Arc–arc collision in the Izu collision zone, central Japan, deduced from the Ashigara basin and adjacent Tanzawa mountains. *Island Arc*, **7**, 330–341.
- STEIN, M. & HOFMANN, A. W. 1993. Mantle plumes and episodic crustal growth. *Nature*, **372**, 63–68.
- STERN, C. R. 1991. Role of subduction erosion in the generation of Andean magmas. *Geology*, **19**, 78–81, doi:10.1130/0091-7613(1991)0192.3.CO:2.
- STERN, R. J. 2004. Subduction initiation: Spontaneous and induced. *Earth and Planetary Science Letters*, **226**, 275–292.
- STERN, R. J. 2005. Evidence from ophiolites, blueschists and ultrahigh-pressure metamorphic terranes that the modern episode of subduction tectonics began in the Neoproterozoic. *Geology*, **33**, 557–560.
- STERN, R. J. in press. Neoproterozoic crustal growth: The solid Earth system during a critical episode of Earth history. *Gondwana Research*.
- STERN, R. J. & BLOOMER, S. H. 1992. Subduction zone infancy: Examples from the Eocene Izu–Bonin–Mariana and Jurassic California arcs. *Geological Society of America Bulletin*, **104**, 1621–1636.
- STERN, R. J., JOHNSON, P. R., KRÖNER, A. & YIBAS, B. 2004. Neoproterozoic ophiolites of the Arabian–Nubian Shield. In: KUSKY, T. M. (ed.) *Precambrian Ophiolites and Related Rocks*. Elsevier Developments in Precambrian Geology, **13**, 95–128.
- ST-ONGE, M. R., VAN GOOL, J. A. M., GARDE, A. A. & SCOTT, D. J. 2009. Correlation of Archean and Palaeoproterozoic units between northeastern Canada and western Greenland: constraining the pre-collisional upper plate accretionary history of the Trans-Hudson orogen. In: CAWOOD, P. A. & KRÖNER, A. (eds) *Earth Accretionary Systems in Space and Time*. Geological Society, London, Special Publications, **318**, 193–235.
- SUTHERLAND, R. & HOLLIS, C. 2001. Cretaceous demise of the Moa plate and strike–slip motion at the Gondwana margin. *Geology*, **29**, 279–282.
- SYME, E. C., LUCAS, S. B., BAILES, A. H. & STERN, R. A. 1999. Contrasting arc and MORB-like assemblages in the Palaeoproterozoic Flin Flon Belt, Manitoba, and the role of intra-arc extension in localizing volcanic-hosted massive sulphide deposits. *Canadian Journal of Earth Sciences*, **36**, 1767–1788.
- TAPPONNIER, P., XU, Z., ROGER, F., MEYER, B., ARNAUD, N., WITTLINGER, G., JINGSUI, Y. & YANG, J. 2001. Oblique stepwise rise and growth of the Tibet Plateau. *Science*, **294**, 1671–1677.

- TATSUMI, Y. 2005. The subduction factory: How it operates on Earth. *GSA Today*, **15**, 4–10.
- TATSUMI, Y. & EGGINS, S. 1995. *Subduction Zone Magmatism*. Blackwell, Cambridge, MA.
- TATSUMI, Y., MARUYAMA, S. & NOHDA, S. 1990. Mechanism of backarc opening in the Japan Sea: Role of asthenospheric injection. *Tectonophysics*, **181**, 299–306.
- TAYLOR, B. & KARNER, G. D. 1983. On the evolution of marginal basins. *Reviews of Geophysics and Space Physics*, **21**, 1727–1741.
- TAYLOR, S. R. 1967. The origin and growth of continents. *Tectonophysics*, **4**, 17–34.
- TAYLOR, S. R. & MCCLENNAN, S. M. 1985. *The Continental Crust: Its Composition and Evolution*. Blackwell Scientific, Oxford.
- THOMPSON, A. B., SCHULMANN, K., JEZEK, J. & TOLAR, V. 2001. Thermally softened continental extensional zones (arcs and rifts) as precursors to thickened orogenic belts. *Tectonophysics*, **332**, 115–141.
- TROUW, R. A. J. & DE WIT, M. J. 1999. Relation between Gondwanide Orogen and contemporaneous intracratonic deformation. *Journal of African Earth Sciences*, **28**, 203–213.
- UNDERWOOD, M. B. (ed.) 1993. *Thermal Evolution of the Tertiary Shimanto Belt, Southwest Japan: An Example of Ridge–Trench Interaction*. Geological Society of America, Special Papers, **273**.
- UYEDA, S. & KANAMORI, H. 1979. Back-arc opening and the mode of subduction. *Journal of Geophysical Research*, **84**, 1049–1061.
- VAN GOOL, J. A. M. & CAWOOD, P. A. 1994. Frontal vs. basal accretion and contrasting particle paths in metamorphic thrust belts. *Geology*, **22**, 51–54.
- VAN HUNEN, J., VAN DEN BERG, A. P. & VLAAR, N. J. 2002. On the role of subducting oceanic plateaus in the development of shallow flat subduction. *Tectonophysics*, **352**, 317–333.
- VAN KRANENDONK, M. J., HUGH SMITHIES, R., HICKMAN, A. H. & CHAMPION, D. C. 2007. Review: Secular tectonic evolution of Archean continental crust: Interplay between horizontal and vertical processes in the formation of the Pilbara Craton, Australia. *Terra Nova*, **19**, 1–38.
- VAN STAAL, C. R., DEWEY, J. F., MAC NIOCALL, C. & MCKERROW, W. S. 1998. The Cambrian–Silurian tectonic evolution of the northern Appalachian and British Caledonides: history of a complex west and southwest Pacific-type segment of Iapetus. In: BUNDELL, D. J. & SCOTT, A. C. (eds) *Lyell: The Past is the Key to the Present*. Geological Society, London, Special Publications, **143**, 199–242.
- VAUGHAN, A. P. M. 1995. Circum-Pacific mid-Cretaceous deformation and uplift: A superplume-related event? *Geology*, **23**, 491–494.
- VAUGHAN, A. P. M. & LIVERMORE, R. A. 2005. Episodicity of Mesozoic terrane accretion along the Pacific margin of Gondwana: Implications for superplume–plate interactions. In: VAUGHAN, A. P. M., LEAT, P. T. & PANKHURST, R. J. (eds) *Terrane Processes at the Margins of Gondwana*. Geological Society, London, Special Publications, **246**, 143–178.
- WALTER, M. R., VEEVERS, J. J., CALVER, C. R. & GREY, K. 1995. Neoproterozoic stratigraphy of the Centralian Superbasin, Australia. *Precambrian Research*, **73**, 173–195.
- WANG, K., HYNDMAN, R. D. & YAMANO, M. 1995. Thermal regime of the Southwest Japan subduction zone: Effects of age history of the subducting plate. *Tectonophysics*, **248**, 53–69.
- WANG, Y. X., MOONEY, W. D., YUAN, X. C. & OKAYA, N. in press. Crustal structure of the northeastern Tibetan Plateau from the southern Tarim basin to the Sichuan basin. *Journal of Geophysical Research*.
- WANNAMAKER, P. E., BOOKER, J. R., JONES, A. G., CHAVE, A. D., FILLOUX, J. H., WAFF, H. S. & LAW, L. K. 1989. Resistivity cross-section through the Juan de Fuca subduction system and its tectonic implications. *Journal of Geophysical Research*, **94**, 14127–14144.
- WELLS, R. E., BLAKELY, R. J., SUGIYAMA, Y., SCHOLL, D. W. & DINTERMAN, P. A. 2003. Basin-centered asperities in great subduction zone earthquakes: A link between slip, subsidence, and subduction erosion? *Journal of Geophysical Research*, **108**, 2507, doi:10.1029/2002JB002072.
- WILLIAMS, I. S. & COLLINS, W. J. 1990. Granite–greenstone terranes in the Pilbara Block, Australia, as coeval volcano–plutonic complexes; Evidence from U–Pb zircon dating of the Mount Edgar Batholith. *Earth and Planetary Science Letters*, **97**, 41–53.
- WILSON, J. T. 1966. Did the Atlantic close and then re-open? *Nature*, **211**, 676–681.
- WINDLEY, B. F. 1992. Proterozoic collisional and accretionary orogens. In: CONDIE, K. C. (ed.) *Proterozoic Crustal Evolution*. Developments in Precambrian Geology, **10**, 419–446.
- WINDLEY, B. F. & GARDE, A. A. 2009. Arc-generated blocks with crustal sections in the North Atlantic craton of West Greenland: New mechanism of crustal growth in the Archean with modern analogues. *Earth-Science Reviews*, **93**, 1–30.
- WINDLEY, B. F. & SMITH, J. V. 1976. Archean high-grade complexes and modern continental margins. *Nature*, **260**, 671–675.
- WINDLEY, B. F., WHITEHOUSE, M. J. & BA-BA-BTTAT, M. A. O. 1996. Early Precambrian gneiss terranes and Pan-African island arcs in Yemen: Crustal accretion of the eastern Arabian Shield. *Geology*, **24**, 131–134.
- WINDLEY, B. F., ALEXEIEV, D., XIAO, W., KRÖNER, A. & BADARCH, G. 2007. Tectonic models for accretion of the Central Asian Orogenic Belt. *Journal of the Geological Society, London*, **164**, 31–47.
- WU, F.-Y., JAHN, B.-M., WILDE, S. & SUN, D.-Y. 2000. Phanerozoic crustal growth: U–Pb and Sr–Nd isotopic evidence from the granites in northeastern China. *Tectonophysics*, **328**, 89–113.
- WYMAN, D. A., BLEEKER, W. & KERRICH, R. 1999a. A 2.7 Ga plume, proto-arc, to arc transition and the geodynamic setting of the Kidd Creek deposit: Evidence from precise ICP MS trace element data. *Economic Geology Monograph*, **10**, 511–528.
- WYMAN, D. A., KERRICH, R. & GROVES, D. I. 1999b. Lode gold deposits and Archean mantle–island arc interaction, Abitibi Subprovince, Canada. *Journal of Geology*, **107**, 715–725.



- XIAO, W., WINDLEY, B. F., HAO, J. & ZHAI, M. 2003. Accretion leading to collision and the Permian Solonker suture, Inner Mongolia, China: Termination of the Central Asian Orogenic Belt. *Tectonics*, **22**, 1069, doi:10.1029/2002TC001484.
- XIAO, W., WINDLEY, B. F., BADARCH, G., SUN, S., LI, J., QIN, K. & WANG, Z. 2004. Palaeozoic accretionary and convergent tectonics of the southern Altaids: Implications for the growth of Central Asia. *Journal of the Geological Society, London*, **161**, 339–342.
- XIAO, X., LI, T., LI, G. & YUAN, X. 1998. *Tectonic evolution of the lithosphere of the Himalayas (General principle)*. Structural Geology and Geomechanics, Series 5, 7, Geological Publishing House, Beijing [in Chinese].
- ZHAO, G., WILDE, S. A., LI, S., SUN, M., GRANT, M. L. & LI, X. 2007. U–Pb zircon age constraints on the Dongwanzi ultramafic–mafic body, North China, confirm it is not an Archean ophiolite. *Earth and Planetary Science Letters*, **255**, 85–93.
- ZHOU, D. & GRAHAM, S. A. 1996. The Songpan–Ganzi complex of the West Qinling Shan as a Triassic remnant ocean basin. In: YIN, A. & HARRISON, T. M. (eds) *The Tectonic Evolution of Asia*. Cambridge University Press, Cambridge, 281–299.